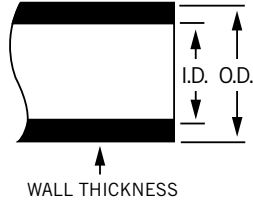
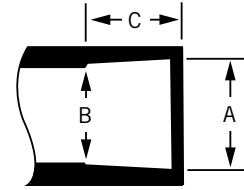


STANDARD SCHEDULE 80 DIMENSIONS

Pipe Dimension
 ASTM D1785 (PVC)
 ASTM F441 (CPVC)



Socket Dimension
 ASTM D2467 (PVC)
 ASTM F439 (CPVC)



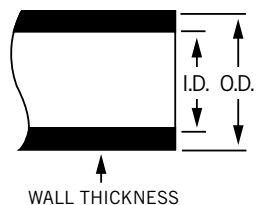
Nominal Pipe Size (in)	Pipe O.D.	O.D. Tolerance	Minimum Wall Thickness
1/8	0.405	±0.004	0.095
1/4	0.540	±0.004	0.119
3/8	0.675	±0.004	0.126
1/2	0.840	±0.004	0.147
3/4	1.050	±0.004	0.154
1	1.315	±0.005	0.179
1-1/4	1.660	±0.005	0.191
1-1/2	1.900	±0.006	0.200
2	2.375	±0.006	0.218
2-1/2	2.875	±0.007	0.276
3	3.500	±0.008	0.300
4	4.500	±0.009	0.337
5	5.563	±0.010	0.375
6	6.625	±0.011	0.432
8	8.625	±0.015	0.500
10	10.750	±0.015	0.593
12	12.750	±0.015	0.687

Nominal Pipe Size (in)	Diameter			
	Socket Entrance I.D. (A)	Socket Bottom I.D. (B)	Tolerance (A)	Minimum Socket Length (C)
1/8	0.417	0.401	±0.004	0.500
1/4	0.552	0.536	±0.004	0.625
3/8	0.687	0.671	±0.004	0.750
1/2	0.848	0.836	±0.004	0.875
3/4	1.058	1.046	±0.004	1.000
1	1.325	1.310	±0.005	1.125
1-1/4	1.670	1.655	±0.005	1.250
1-1/2	1.912	1.894	±0.006	1.375
2	2.387	2.369	±0.006	1.500
2-1/2	2.889	2.868	±0.007	1.750
3	3.516	3.492	±0.008	1.875
4	4.518	4.491	±0.009	2.250
5	5.583	5.553	±0.010	2.625
6	6.647	6.614	±0.011	3.000
8	8.665	8.610	±0.015	4.000
10	10.780	10.735	±0.015	5.000
12	12.780	12.735	±0.015	6.000

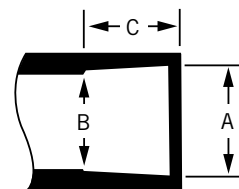
Note: All dimensions measured in inches (in.)

STANDARD SCHEDULE 40 DIMENSIONS

Pipe Dimension
ASTM D1785



Socket Dimension
ASTM D2466



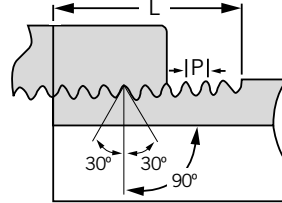
Nominal Pipe Size (in)	Pipe O.D.	O.D. Tolerance	Minimum Wall Thickness
1/8	0.405	±0.004	0.068
1/4	0.540	±0.004	0.088
3/8	0.675	±0.004	0.091
1/2	0.840	±0.004	0.109
3/4	1.050	±0.004	0.113
1	1.315	±0.005	0.133
1-1/4	1.660	±0.005	0.140
1-1/2	1.900	±0.006	0.145
2	2.375	±0.006	0.154
2-1/2	2.875	±0.007	0.203
3	3.500	±0.008	0.216
4	4.500	±0.009	0.237
5	5.563	±0.010	0.258
6	6.625	±0.011	0.280
8	8.625	±0.015	0.322
10	10.750	±0.015	0.365
12	12.750	±0.015	0.406

Nominal Pipe Size (in)	Diameter			
	Socket Entrance I.D. (A)	Socket Bottom I.D. (B)	Tolerance (A)	Minimum Socket Length (C)
1/8	0.417	0.401	±0.004	0.500
1/4	0.552	0.536	±0.004	0.500
3/8	0.687	0.671	±0.004	0.594
1/2	0.848	0.836	±0.004	0.688
3/4	1.058	1.046	±0.004	0.719
1	1.325	1.310	±0.005	0.875
1-1/4	1.670	1.655	±0.005	0.938
1-1/2	1.912	1.894	±0.006	1.094
2	2.387	2.369	±0.006	1.156
2-1/2	2.889	2.868	±0.007	1.750
3	3.516	3.492	±0.008	1.875
4	4.518	4.491	±0.009	2.000
5	5.583	5.553	±0.010	3.000
6	6.647	6.614	±0.011	3.000
8	8.665	8.610	±0.015	4.000
10	10.780	10.735	±0.015	5.000
12	12.780	12.735	±0.015	6.000

Note: All dimensions measured in inches (in.)

NPT - NATIONAL PIPE THREAD

American National Standard Taper Pipe Threads
(NPT) ANSI B1.20.1, ASTM F1498



Nominal Pipe Size (in)	Pipe O.D.	Female Thread Min. Length (T)	Male Thread Min. Length (S)	Overall thread Length (L)	Thread Pitch (P)	Thread Per Inch	Height of Thread (H)
1/8	0.405	0.380	0.310	0.3924	0.03704	27.0	0.02963
1/4	0.540	0.500	0.440	0.5946	0.05556	18.0	0.04444
3/8	0.675	0.500	0.440	0.6006	0.05556	18.0	0.04444
1/2	0.840	0.640	0.530	0.7815	0.07143	14.0	0.05714
3/4	1.050	0.650	0.550	0.7935	0.07143	14.0	0.05714
1	1.315	0.810	0.680	0.9845	0.08696	11.5	0.06957
1-1/4	1.660	0.850	0.710	1.0085	0.08696	11.5	0.06957
1-1/2	1.900	0.850	0.720	1.0252	0.08696	11.5	0.06957
2	2.375	0.900	0.760	1.0582	0.08696	11.5	0.06957
2-1/2	2.875	1.210	1.140	1.5712	0.12500	8.0	0.10000
3	3.500	1.300	1.200	1.6337	0.12500	8.0	0.10000
4	4.500	1.380	1.300	1.7337	0.12500	8.0	0.10000
6	6.625	1.500	1.440	1.9462	0.12500	8.0	0.10000

Note: The basic dimensions of the American National Standard Taper Pipe Thread are given in inches to four or five decimal places. While this implies a great degree of precision than ordinarily attained, these dimensions are the basis of gage dimensions and are so expressed for the purpose of eliminating errors in computation.

SECTION TWO: SCHEDULE 80 FITTINGS

A. MANUFACTURER'S PRODUCT SPECIFICATION: SCHEDULE 80 PVC

Scope

This specification sheet covers the manufacturer's requirements for Xirtec®140 PVC Schedule 80 pipe fittings as manufactured by IPEX. These fittings meet or exceed the standards set by the American Society for Testing and Materials (ASTM) and the National Sanitation Foundation (NSF) International, Standards 14/61.

PVC Materials

Rigid Xirtec®140 PVC (Polyvinyl Chloride) used in the manufacture of Schedule 80 fittings is of Type I, Grade 1 compound (cell classification 12454) as stated in ASTM D1784. Raw material used in molding shall contain the specified amounts of color pigment, stabilizers, and other additives approved by NSF International.

Dimensions

Physical dimensions and tolerances of Xirtec®140 PVC Schedule 80 IPS fittings as manufactured by IPEX meet the requirements of ASTM Standard Specification D2467 for socket-type fittings and ASTM D2464 for threaded fittings. Threaded fittings have Taper Pipe Threads in accordance with ANSI/ASME B1.20.1. Flanged fittings have nominal dimensions in accordance with ANSI/ASME B16.5.

Marking

Xirtec®140 PVC Schedule 80 fittings are marked as prescribed in ASTM D2467 and D2464 to indicate the manufacturer's name and trademark, material designation, the NSF mark, size of fitting, and ASTM designation D2467 (socket) or D2464 (threaded).

Sample Specification

All Schedule 80 socket fittings shall conform to ASTM D2467. All Schedule 80 threaded fittings shall conform to ASTM D2464. All 150 Class flanges shall conform to ANSI/ASME B16.5. All pipe, fittings, and valves shall be compatible Xirtec®140 compound and produced by one manufacturer; as supplied by IPEX.

Notes

All dimensions are in inches unless otherwise specified. Dimensions are subject to change without notice. Contact the factory for clarifications.



B. MANUFACTURER'S PRODUCT SPECIFICATION: SCHEDULE 80 CPVC

Scope

This specification sheet covers the manufacturer's requirements for Corzan® CPVC Schedule 80 pipe fittings as manufactured by IPEX. These fittings meet or exceed the standards set by the American Society for Testing and Materials (ASTM) and the National Sanitation Foundation (NSF) International, Standards 14/61.

CPVC Materials

Rigid Corzan® CPVC (Chlorinated Polyvinyl Chloride) used in the manufacture of Schedule 80 fittings is of Type IV, Grade 1 compound (cell classification 24448) as stated in ASTM D1784. Raw material used in molding shall contain the specified amounts of color pigment, stabilizers, and other additives approved by NSF International.

Dimensions

Physical dimensions and tolerances of Corzan® CPVC Schedule 80 IPS fittings as manufactured by IPEX meet the requirements of ASTM Standard Specification F439 for socket-type fittings and ASTM F437 for threaded fittings. Threaded fittings have Taper Pipe Threads in accordance with ANSI/ASME B1.20.1. Flanged fittings have nominal dimensions in accordance with ANSI/ASME B16.5.

Marking

Corzan® CPVC Schedule 80 fittings are marked as prescribed in ASTM F439 and F437 to indicate the manufacturer's name and trademark, material designation, the NSF mark, size of fitting, and ASTM designation F439 (socket) or F437 (threaded).

Sample Specification

All Schedule 80 socket fittings shall conform to ASTM F439. All Schedule 80 threaded fittings shall conform to ASTM F437. All 150 Class flanges shall conform to ANSI/ASME B16.5. All pipe, fittings, and valves shall be compatible Corzan® compound and produced by one manufacturer; as supplied by IPEX.

Notes

All dimensions are in inches unless otherwise specified. Dimensions are subject to change without notice. Contact the factory for clarifications.

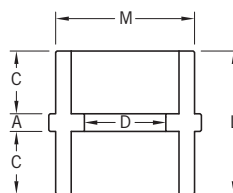
*Corzan is a trademark of Lubrizol Corporation and is registered or under application in various countries of the world.



SCHEDULE 80 FITTINGS

COUPLING

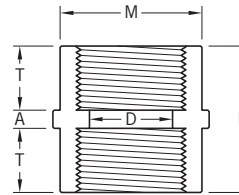
(SOC x SOC)



Nominal Pipe Size (in)	Xirtec		Corzan		Dimensions					
	Universal Part #	IPEX Part #	Universal Part #	IPEX Part #	A	C	D	L	M	Wt (lbs)
1/4 x 1/4	829002	036088	9829002	059130	0.065	0.655	0.302	1.375	0.845	0.020
3/8 x 3/8	829003	036089	9829003	059131	0.125	0.750	0.423	1.625	1.000	0.031
1/2 x 1/2	829005	036090	9829005	059132	0.120	0.900	0.526	1.920	1.240	0.055
3/4 x 3/4	829007	036091	9829007	059133	0.100	1.035	0.722	2.170	1.505	0.073
1 x 1	829010	036092	9829010	059134	0.105	1.145	0.936	2.395	1.770	0.123
1-1/4 x 1-1/4	829012	036093	9829012	059135	0.110	1.280	1.255	2.670	2.140	0.172
1-1/2 x 1-1/2	829015	036094	9829015	059136	0.115	1.400	1.476	2.915	2.410	0.227
2 x 2	829020	036095	9829020	059137	0.100	1.535	1.913	3.170	2.900	0.311
2-1/2 x 2-1/2	829025	036096	9829025	059138	0.195	1.780	2.290	3.755	3.570	0.550
3 x 3	829030	036097	9829030	059139	0.225	1.900	2.864	4.025	4.195	0.829
4 x 4	829040	036098	9829040	059140	0.215	2.275	3.786	4.765	5.285	1.444
6 x 6	829060	036099	9829060	059141	0.270	3.020	5.709	6.310	7.645	3.435
8 x 8	829080	036100	9829080	059142	0.545	4.540	7.565	9.625	9.870	6.610

SCHEDULE 80 FITTINGS

COUPLING
(FPT x FPT)

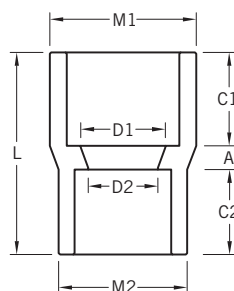


Nominal Pipe Size (in)	Xirtec		Corzan		Dimensions					
	Universal Part #	IPEX Part #	Universal Part #	IPEX Part #	A	D	L	M	T	Wt (lbs)
1/4 x 1/4	830002	036104	9830002	059143	0.155	0.302	1.345	0.845	0.595	0.020
3/8 x 3/8	830003	036105	9830003	059144	0.280	0.423	1.470	1.000	0.595	0.040
1/2 x 1/2	830005	036106	9830005	059145	0.095	0.526	1.605	1.240	0.755	0.073
3/4 x 3/4	830007	036107	9830007	059146	0.110	0.722	1.620	1.505	0.755	0.086
1 x 1	830010	036108	9830010	059147	0.130	0.936	2.010	1.770	0.940	0.148
1-1/4 x 1-1/4	830012	036109	9830012	059148	0.110	1.255	2.210	2.140	1.055	0.216
1-1/2 x 1-1/2	830015	036110	9830015	059149	0.095	1.476	2.225	2.410	1.065	0.273
2 x 2	830020	036111	9830020	059150	0.100	1.913	2.500	2.900	1.200	0.381
2-1/2 x 2-1/2	830025	036112	9830025	059151	0.205	2.290	3.125	3.570	1.460	0.692
3 x 3	830030	036113	9830030	059152	0.130	2.864	3.190	4.195	1.530	1.060
4 x 4	830040	036114	9830040	059153	0.235	3.786	3.405	5.285	1.585	1.490

SCHEDULE 80 FITTINGS

REDUCING COUPLING

(SOC x SOC)

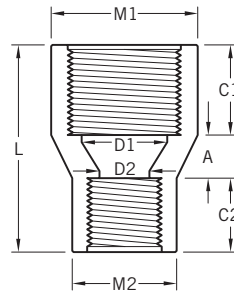


Nominal Pipe Size (in)	Xirtec		Corzan		Dimensions								
	Universal Part #	IPEX Part #	Universal Part #	IPEX Part #	A	C1	C2	D1	D2	L	M1	M2	Wt (lbs)
3/4 x 1/2	829101	036719	9829101	059460	0.155	1.040	0.885	0.722	0.526	2.080	1.505	1.240	0.073
1 x 1/2	829130	036720	9829130	059461	0.330	1.165	0.885	0.936	0.526	2.380	1.770	1.240	0.101
1 x 3/4	829131	036721	9829131	059462	0.185	1.165	1.035	0.936	0.722	2.385	1.770	1.505	0.100
1-1/4 x 1/2	-	-	9829166	059621	0.125	1.250	0.875	1.255	0.526	2.250	2.140	1.240	0.132
1-1/4 x 3/4	829167	036723	9829167	059622	0.310	1.280	1.000	1.255	0.722	2.590	2.140	1.505	0.141
1-1/4 x 1	829168	036724	9829168	059463	0.225	1.280	1.155	1.255	0.936	2.660	2.140	1.770	0.157
1-1/2 x 1/2	829209	036725	9829209	059623	0.595	1.375	0.875	1.476	0.526	2.845	2.410	1.240	0.170
1-1/2 x 3/4	829210	036726	9829210	059464	0.470	1.375	1.000	1.476	0.722	2.845	2.410	1.505	0.181
1-1/2 x 1	829211	036727	9829211	059465	0.490	1.410	1.160	1.476	0.936	3.060	2.410	1.770	0.209
1-1/2 x 1-1/4	829212	036728	9829212	059466	0.360	1.410	1.280	1.476	1.255	3.050	2.410	2.140	0.210
2 x 1/2	829247	036897	-	-	0.095	1.500	0.885	1.913	0.526	2.480	2.900	1.240	0.249
2 x 3/4	-	-	9829248	059624	0.725	1.500	1.000	1.913	0.722	3.225	2.900	1.505	0.287
2 x 1	829249	036729	9829249	059467	0.825	1.545	1.160	1.913	0.936	3.530	2.900	1.770	0.289
2 x 1-1/4	-	-	9829250	059625	0.475	1.500	1.250	1.913	1.255	3.225	2.900	2.140	0.309
2 x 1-1/2	829251	036731	9829251	059458	0.565	1.540	1.410	1.913	1.476	3.515	2.900	2.410	0.326
2-1/2 x 2	-	-	9829292	059626	0.385	1.750	1.500	2.290	1.913	3.635	3.570	2.900	0.353
3 x 2	829338	036735	9829338	059470	0.755	1.910	1.535	2.864	1.913	4.200	4.195	2.900	0.701
4 x 2	829420	036736	9829420	059459	1.280	2.290	1.540	3.786	1.913	5.110	5.285	2.900	1.257
4 x 3	829422	036738	9829422	059472	0.910	2.290	1.905	3.786	2.864	5.105	5.285	4.195	1.338
6 x 4	829532	036740	9829532	059471	1.420	3.030	2.290	5.709	3.786	6.740	7.645	5.285	3.157
8 x 6	829585	036743	9829585	059473	1.000	4.040	3.000	7.565	5.709	8.040	9.870	7.645	6.199

SCHEDULE 80 FITTINGS

REDUCING COUPLING

(FPT x FPT)

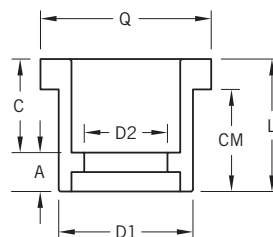


Nominal Pipe Size (in)	Xirtec		Corzan		Dimensions								
	Universal Part #	IPEX Part #	Universal Part #	IPEX Part #	A	C1	C2	D1	D2	L	M1	M2	Wt (lbs)
1/2 x 1/4	830072	036746	-	-	0.780	0.875	0.625	0.526	0.302	2.280	1.240	0.845	0.049
3/4 x 1/2	830101	036748	-	-	0.470	1.000	0.875	0.722	0.526	2.345	1.505	1.240	0.090
1 x 1/2	830130	036749	-	-	0.630	1.125	0.985	0.936	0.526	2.740	1.770	1.240	0.201
1 x 3/4	830131	036750	-	-	0.615	1.125	1.000	0.936	0.722	2.740	1.770	1.505	0.201
1-1/4 x 3/4	830167	036751	-	-	0.265	1.250	1.525	1.255	0.722	3.040	2.140	1.505	0.291
1-1/2 x 1	830211	036754	-	-	0.655	1.375	1.125	1.476	0.936	3.155	2.410	1.770	0.311
2 x 1-1/2	830251	035758	-	-	0.530	1.500	1.375	1.913	1.476	3.405	2.900	2.410	0.560

SCHEDULE 80 FITTINGS

REDUCING BUSHING

(SPG x SOC)

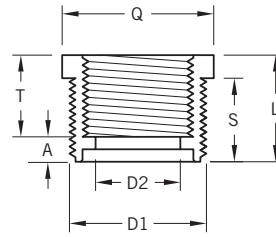


Nominal Pipe Size (in)	Xirtec		Corzan		Dimensions							
	Universal Part #	IPEX Part #	Universal Part #	IPEX Part #	A	C	CM	D1	D2	L	Q	Wt (lbs)
3/8 x 1/4	837052	036599	9837052	059627	0.225	0.750	0.770	0.675	0.302	0.975	0.800	0.011
1/2 x 1/4	837072	036600	9837072	059373	0.215	0.875	0.890	0.840	0.302	1.090	0.970	0.020
1/2 x 3/8	837073	036601	9837073	059374	0.240	0.875	0.880	0.840	0.423	1.115	1.005	0.010
3/4 x 1/2	837101	036604	9837101	059375	0.380	1.000	1.020	1.050	0.526	1.380	1.250	0.033
1 x 1/2	837130	036605	9837130	059376	0.375	1.125	1.125	1.315	0.526	1.500	1.635	0.073
1 x 3/4	837131	036606	9837131	059377	0.380	1.125	1.305	1.315	0.722	1.505	1.635	0.057
1-1/4 x 1/2	837166	036607	9837166	059378	0.385	1.250	1.260	1.660	0.526	1.635	2.080	0.139
1-1/4 x 3/4	837167	036608	9837167	059379	0.375	1.250	1.255	1.660	0.722	1.625	2.075	0.123
1-1/4 x 1	837168	036609	9837168	059380	0.435	1.250	1.305	1.660	0.936	1.685	2.065	0.099
1-1/2 x 1/2	837209	036610	9837209	059381	0.380	1.375	1.380	1.900	0.526	1.755	2.260	0.163
1-1/2 x 3/4	837210	036611	9837210	059382	0.375	1.375	1.380	1.900	0.722	1.750	2.260	0.172
1-1/2 x 1	837211	036612	9837211	059383	0.380	1.375	1.380	1.900	0.936	1.755	2.260	0.146
1-1/2 x 1-1/4	837212	036613	9837212	059384	0.465	1.295	1.385	1.900	1.255	1.760	2.265	0.099
2 x 1/2	837247	036614	9837247	059385	0.375	1.500	1.505	2.375	0.526	1.875	2.815	0.236
2 x 3/4	837248	036615	9837248	059386	0.365	1.500	1.505	2.375	0.722	1.865	2.820	0.258
2 x 1	837249	036616	9837249	059387	0.375	1.500	1.520	2.375	0.936	1.875	2.825	0.247
2 x 1-1/4	837250	036617	9837250	059388	0.395	1.500	1.520	2.375	1.255	1.895	2.840	0.236
2 x 1-1/2	837251	036618	9837251	059389	0.385	1.500	1.445	2.375	1.476	1.885	2.820	0.194
2-1/2 x 1-1/4	837290	036620	9837290	059628	0.950	1.350	2.000	2.875	1.255	2.300	3.280	0.430
2-1/2 x 1-1/2	837291	036621	9837291	059629	0.740	1.560	2.000	2.875	1.476	2.300	3.290	0.452
2-1/2 x 2	837292	036622	9837292	059392	0.370	1.750	1.885	2.875	1.913	2.120	3.270	0.280
3 x 1	837335	036623	9837335	059568	0.390	1.875	1.900	3.500	0.936	2.265	3.905	0.593
3 x 1-1/4	837336	036269	9837336	059630	0.390	1.875	1.870	3.500	1.255	2.265	3.735	0.639
3 x 1-1/2	837337	036624	9837337	059393	0.375	1.875	1.870	3.500	1.476	2.250	3.890	0.595
3 x 2	837338	036625	9837338	059394	0.375	1.875	1.870	3.500	1.913	2.250	3.890	0.650
3 x 2-1/2	837339	036626	9837339	059395	0.385	1.875	1.885	3.500	2.290	2.260	3.900	0.423
4 x 2	837420	036628	9837420	059396	0.410	2.250	2.280	4.500	1.913	2.660	4.910	1.091
4 x 2-1/2	837421	036629	-	-	0.405	2.250	2.270	4.500	2.290	2.655	4.890	1.050
4 x 3	837422	036630	9837422	059397	0.415	2.250	2.270	4.500	2.864	2.665	4.920	0.895
6 x 2	837528	036632	9837528	059398	0.990	3.000	3.470	6.625	1.913	3.990	6.850	3.007
6 x 3	837530	036633	9837530	059399	0.720	3.000	3.100	6.625	2.864	3.720	7.335	3.038
6 x 4	837532	036634	9837532	059400	0.720	3.000	3.105	6.625	3.786	3.720	7.330	3.086
8 x 4	837582	136155	-	-	1.120	4.000	4.055	8.625	3.786	5.120	9.435	1.920
8 x 6	837585	036638	9837585	059401	0.465	4.000	4.085	8.625	5.709	4.465	9.360	5.500

SCHEDULE 80 FITTINGS

REDUCING BUSHING

(MPT x FPT)

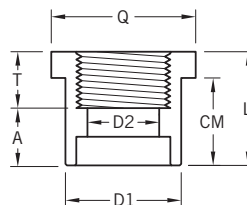


Nominal Pipe Size (in)	Xirtec		Corzan		Dimensions							
	Universal Part #	IPEX Part #	Universal Part #	IPEX Part #	A	D1	D2	L	Q	S	T	Wt (lbs)
3/8 x 1/4	839052	036647	9839052	059402	0.185	0.675	0.302	0.810	0.805	0.600	0.625	0.010
1/2 x 1/4	839072	036648	9839072	059403	0.305	0.840	0.302	0.875	0.875	0.680	0.570	0.020
1/2 x 3/8	839073	036649	9839073	059404	0.360	0.840	0.423	0.940	1.000	0.745	0.580	0.011
3/4 x 1/4	839098	036651	9839098	059405	0.335	1.050	0.302	1.010	1.185	0.785	0.675	0.031
3/4 x 3/8	839099	036652	9839099	059406	0.405	1.050	0.423	1.005	1.200	0.785	0.600	0.031
3/4 x 1/2	839101	036653	9839101	059407	0.235	1.050	0.526	0.995	1.380	0.685	0.760	0.029
1 x 1/4	839128	036654	9839128	059643	0.600	1.315	0.302	1.230	1.500	0.960	0.630	0.060
1 x 3/8	839129	036655	9839129	059642	0.600	1.315	0.423	1.225	1.500	0.980	0.625	0.051
1 x 1/2	839130	036656	9839130	059408	0.365	1.315	0.526	1.130	1.685	0.815	0.765	0.053
1 x 3/4	839131	036657	9839131	059409	0.385	1.315	0.722	1.160	1.690	0.820	0.775	0.042
1-1/4 x 1/2	839166	036658	9839166	059410	0.675	1.660	0.526	1.370	2.070	0.990	0.695	0.108
1-1/4 x 3/4	839167	036659	9839167	059411	0.585	1.660	0.722	1.390	2.075	1.010	0.805	0.104
1-1/4 x 1	839168	036660	9839168	059412	0.375	1.660	0.936	1.395	2.070	1.015	1.020	0.084
1-1/2 x 1/2	839209	036661	9839209	059413	0.380	1.900	0.526	1.215	2.100	0.900	0.835	0.110
1-1/2 x 3/4	839210	036662	9839210	059414	0.570	1.900	0.722	1.375	2.315	0.985	0.805	0.134
1-1/2 x 1	839211	036663	9839211	059415	0.385	1.900	0.936	1.380	2.315	0.990	0.995	0.123
1-1/2 x 1-1/4	839212	036664	9839212	059416	0.365	1.900	1.255	1.380	2.315	1.010	1.015	0.084
2 x 1/2	839247	036665	9839247	059417	0.715	2.375	0.526	1.405	2.820	1.035	0.690	0.201
2 x 3/4	839248	036666	9839248	059418	0.575	2.375	0.722	1.385	2.760	1.005	0.810	0.196
2 x 1	839249	036667	9839249	059419	0.390	2.375	0.936	1.385	2.770	0.995	0.995	0.205
2 x 1-1/4	839250	036668	9839250	059420	0.550	2.375	1.255	1.410	2.815	1.035	0.860	0.179
2 x 1-1/2	839251	036669	9839251	059421	0.370	2.375	1.476	1.380	2.760	1.010	1.010	0.148
2-1/2 x 2	839292	036672	9839292	059422	0.905	2.875	1.913	1.970	3.125	1.555	1.065	0.240
3 x 1-1/2	839337	036673	9839337	059423	0.955	3.500	1.476	1.995	3.740	1.625	1.040	0.549
3 x 2	839338	036674	9839338	059424	0.965	3.500	1.913	2.030	3.755	1.625	1.065	0.509
3 x 2-1/2	839339	036675	9839339	059425	0.460	3.500	2.290	2.020	3.740	1.630	1.560	0.379
4 x 2	839420	036676	9839420	059426	0.940	4.500	1.913	1.940	4.730	1.550	1.000	0.829
4 x 3	839422	036677	9839422	059427	0.500	4.500	2.864	2.125	4.755	1.730	1.625	0.690

SCHEDULE 80 FITTINGS

REDUCING BUSHING

(SPG x FPT)



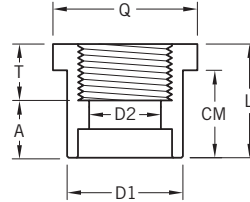
Nominal Pipe Size	Xirtec		Corzan		Dimensions							
	Universal Part #	IPEX Part #	Universal Part #	IPEX Part #	A	CM	D1	D2	L	Q	T	Wt. (lbs)
3/8 x 1/4	838052	036679	9838052	059634	0.360	0.750	0.675	0.302	0.960	0.795	0.600	0.011
1/2 x 1/8	-	-	9838071	059635	0.690	0.880	0.840	0.195	1.095	0.940	0.405	0.022
1/2 x 1/4	838072	036681	9838072	059428	0.445	0.820	0.840	0.302	1.015	0.880	0.570	0.020
1/2 x 3/8	838073	036682	9838073	059429	0.415	0.810	0.840	0.423	1.010	0.890	0.595	0.198
3/4 x 1/4	838098	036683	9838098	059430	0.525	1.000	1.050	0.302	1.230	1.200	0.705	0.397
3/4 x 1/2	838101	036684	9838101	059431	0.570	1.025	1.050	0.526	1.345	1.375	0.775	0.040
1 x 3/8	838129	036685	9838129	059636	0.820	1.160	1.315	0.423	1.410	1.500	0.590	0.060
1 x 1/2	838130	036686	9838130	059432	0.735	1.180	1.315	0.526	1.500	1.685	0.765	0.073
1 x 3/4	838131	036687	9838131	059433	0.725	1.200	1.315	0.722	1.500	1.685	0.775	0.064
1-1/4 x 1/2	838166	036688	9838166	059434	0.875	1.305	1.660	0.526	1.680	2.065	0.805	0.123
1-1/4 x 3/4	838167	036689	9838167	059435	0.955	1.255	1.660	0.722	1.645	2.075	0.690	0.123
1-1/4 x 1	838168	036690	9838168	059436	0.875	1.305	1.660	0.936	1.685	2.065	0.810	0.108
1-1/2 x 1/2	838209	036691	9838209	059437	1.070	1.375	1.900	0.526	1.755	2.260	0.685	0.157
1-1/2 x 3/4	838210	036692	9838210	059438	1.005	1.430	1.900	0.722	1.815	2.325	0.810	0.157
1-1/2 x 1	838211	036693	9838211	059439	0.795	1.415	1.900	0.936	1.805	2.320	1.010	0.154
1-1/2 x 1-1/4	838212	036694	9838212	059440	0.875	1.375	1.900	1.255	1.775	2.260	0.900	0.117
2 x 1/2	838247	036695	9838247	059441	1.195	1.505	2.375	0.526	1.880	2.810	0.685	0.227
2 x 3/4	838248	036696	9838248	059442	1.120	1.535	2.375	0.722	1.925	2.760	0.805	0.227
2 x 1	838249	036697	9838249	059443	0.920	1.540	2.375	0.936	1.915	2.755	0.995	0.236
2 x 1-1/4	838250	036698	9838250	059444	0.925	1.535	2.375	1.255	1.920	2.755	0.995	0.227
2 x 1-1/2	838251	036699	9838251	059445	0.925	1.535	2.375	1.476	1.920	2.755	0.995	0.205
2-1/2 x 1/2	838287	236002	9838287	059637	1.620	1.990	2.875	0.526	2.380	3.110	0.760	0.441
2-1/2 x 3/4	838288	036700	9838288	059446	1.540	1.990	2.875	0.722	2.380	3.110	0.840	0.450
2-1/2 x 1	838289	036701	9838289	059447	1.350	1.990	2.875	0.936	2.380	3.110	1.030	0.441
2-1/2 x 1-1/4	838290	036702	9838290	059448	1.335	1.990	2.875	1.255	2.380	3.110	1.045	0.421
2-1/2 x 1-1/2	838291	036703	9838291	059449	1.355	1.977	2.875	1.476	2.400	3.110	1.045	0.470
2-1/2 x 2	838292	036704	9838292	059450	0.955	1.750	2.875	1.913	1.955	3.190	1.000	0.311
3 x 3/4	838334	036705	9838334	059638	1.550	1.880	3.500	0.722	2.270	3.740	0.720	0.639

Continued

SCHEDULE 80 FITTINGS

REDUCING BUSHING

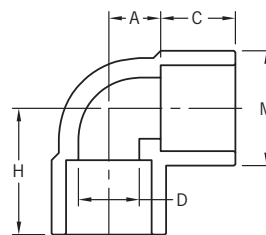
(SPG x FPT) con't



Nominal Pipe Size	Xirtec		Corzan		Dimensions							
	Universal Part #	IPEX Part #	Universal Part #	IPEX Part #	A	CM	D1	D2	L	Q	T	Wt. (lbs)
3 x 1	838335	036706	9838335	059547	1.330	1.980	3.500	0.936	2.375	3.740	1.045	0.571
3 x 1-1/4	838336	036707	9838336	059639	1.310	1.965	3.500	1.255	2.350	3.970	1.040	0.619
3 x 1-1/2	838337	036708	9838337	059451	1.330	1.995	3.500	1.476	2.390	3.720	1.060	0.600
3 x 2	838338	036709	9838338	059452	1.200	1.870	3.500	1.913	2.260	3.720	1.060	0.680
3 x 2-1/2	838339	036710	9838339	059453	0.655	1.750	3.500	2.290	2.095	3.845	1.440	0.461
4 x 2	838420	036711	9838420	059454	0.945	2.280	4.500	1.913	2.655	4.900	1.710	1.076
4 x 2-1/2	838421	036712	9838421	059640	1.080	2.260	4.500	2.290	2.640	4.730	1.560	1.100
4 x 3	838422	036713	9838422	059455	0.605	2.330	4.500	2.864	2.655	4.895	2.050	0.944
6 x 2	838528	036714	-	-	2.915	3.485	6.625	1.913	4.000	6.845	1.085	2.800
6 x 3	838530	036715	9838530	059641	2.330	3.470	6.625	2.864	4.000	6.870	1.670	2.850
6 x 4	838532	036716	9838532	059456	2.240	3.500	6.625	3.786	4.000	6.860	1.760	3.000

SCHEDULE 80 FITTINGS

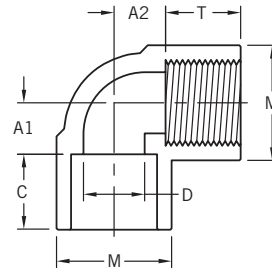
90° ELBOW
(SOC x SOC)



Nominal Pipe Size	Xirtec		Corzan		Dimensions					
	Universal Part #	IPEX Part #	Universal Part #	IPEX Part #	A	C	D	H	M	Wt. (lbs)
1/4 x 1/4	806002	036179	9806002	059192	0.345	0.655	0.302	1.000	0.845	0.031
3/8 x 3/8	806003	036180	9806003	059193	0.470	0.780	0.423	1.250	1.000	0.040
1/2 x 1/2	806005	036181	9806005	059194	0.555	0.890	0.526	1.445	1.215	0.086
3/4 x 3/4	806007	036182	9806007	059195	0.655	1.020	0.722	1.685	1.470	0.115
1 x 1	806010	036183	9806010	059196	0.795	1.145	0.936	1.940	1.760	0.187
1-1/4 x 1-1/4	806012	036184	9806012	059197	0.890	1.270	1.255	2.160	2.145	0.289
1-1/2 x 1-1/2	806015	036185	9806015	059198	1.000	1.400	1.476	2.400	2.385	0.348
2 x 2	806020	036186	9806020	059199	1.280	1.525	1.913	2.805	2.955	0.617
2-1/2 x 2-1/2	806025	036187	9806025	059200	1.525	1.775	2.290	3.300	3.580	1.054
3 x 3	806030	036188	9806030	059201	1.810	1.935	2.864	3.745	4.230	1.523
4 x 4	806040	036189	9806040	059202	2.360	2.265	3.786	4.625	5.345	2.619
6 x 6	806060	036191	9806060	059203	3.625	3.025	5.709	6.650	7.615	7.295
8 x 8	806080	036192	9806080	059204	4.475	4.125	7.565	8.600	9.775	14.733
10 x 10	806100	036864	9806100	059085	5.815	5.500	10.360	11.315	11.935	28.740
12 x 12	806120	036865	9806120	059086	6.885	6.500	11.294	13.385	14.200	43.901

SCHEDULE 80 FITTINGS

90° ELBOW
(SOC x FPT)



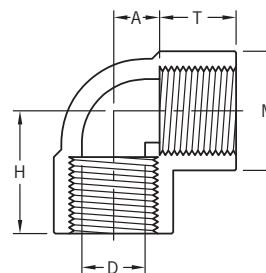
SCHEDULE 80 FITTINGS

Nominal Pipe Size	Xirtec		Corzan		Dimensions						
	Universal Part #	IPEX Part #	Universal Part #	IPEX Part #	A1	A2	C	D	M	T	Wt. (lbs)
1/4 x 1/4	-	-	9807002	059612	0.345	0.345	0.625	0.302	0.845	0.625	0.044
3/8 x 3/8	-	-	9807003	059613	0.250	0.375	0.780	0.423	0.985	0.655	0.050
1/2 x 1/2	807005	036172	9807005	059187	0.540	0.535	0.895	0.526	1.200	0.905	0.084
3/4 x 3/4	807007	036173	9807007	059941	0.610	0.590	1.015	0.722	1.505	1.035	0.146
1 x 1	807010	036174	9807010	059188	0.785	0.785	1.155	0.936	1.760	1.150	0.209
1-1/4 x 1-1/4	807012	036175	9807012	059189	0.975	0.975	1.275	1.255	2.145	1.275	0.302
1-1/2 x 1-1/2	807015	036176	9807015	059190	1.040	1.035	1.375	1.476	2.385	1.400	0.366
2 x 2	807020	036177	9807020	059191	1.375	1.470	1.530	1.913	2.955	0.970	0.650

SCHEDULE 80 FITTINGS

90° ELBOWS

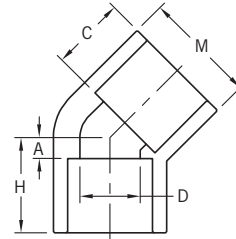
(FPT x FPT)



Nominal Pipe Size	Xirtec		Corzan		Dimensions					
	Universal Part #	IPEX Part #	Universal Part #	IPEX Part #	A	D	H	M	T	Wt. (lbs)
1/4 x 1/4	808002	036197	9808002	059206	0.315	0.302	0.940	0.845	0.625	0.031
3/8 x 3/8	808003	036198	9808003	059207	0.375	0.423	1.000	1.000	0.625	0.051
1/2 x 1/2	808005	036199	9808005	059208	0.630	0.526	1.370	1.215	0.740	0.104
3/4 x 3/4	808007	036200	9808007	059209	0.790	0.722	1.615	1.470	0.825	0.148
1 x 1	808010	036201	9808010	059210	0.680	0.936	1.810	1.760	1.130	0.227
1-1/4 x 1-1/4	808012	036202	9808012	059211	0.865	1.255	1.795	2.145	0.930	0.410
1-1/2 x 1-1/2	808015	036203	9808015	059212	1.110	1.476	2.040	2.385	0.930	0.570
2 x 2	808020	036204	9808020	059213	1.275	1.913	2.370	2.955	1.095	0.648
2-1/2 x 2-1/2	808025	036205	9808025	059214	1.535	2.290	3.310	3.600	1.775	1.208
3 x 3	808030	036206	9808030	059215	1.740	2.864	3.160	4.230	1.420	1.691
4 x 4	808040	036207	9808040	059216	2.240	3.786	3.735	5.345	1.495	2.845

SCHEDULE 80 FITTINGS

45° ELBOW
(SOC x SOC)

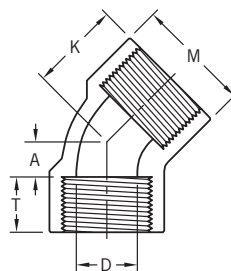


Nominal Pipe Size	Xirtec		Corzan		Dimensions					
	Universal Part #	IPEX Part #	Universal Part #	IPEX Part #	A	C	D	H	M	Wt. (lbs)
1/4 x 1/4	817002	036142	9817002	059162	0.160	0.655	0.302	0.815	0.845	0.031
3/8 x 3/8	817003	036143	9817003	059163	0.220	0.750	0.423	0.970	1.000	0.040
1/2 x 1/2	817005	036144	9817005	059164	0.310	0.890	0.526	1.200	1.215	0.093
3/4 x 3/4	817007	036145	9817007	059165	0.330	1.020	0.722	1.350	1.470	0.099
1 x 1	817010	036146	9817010	059166	0.325	1.150	0.936	1.475	1.760	0.181
1-1/4 x 1-1/4	817012	036147	9817012	059167	0.395	1.265	1.255	1.660	2.145	0.220
1-1/2 x 1-1/2	817015	036148	9817015	059168	0.405	1.385	1.476	1.790	2.385	0.291
2 x 2	817020	036149	9817020	059169	0.495	1.505	1.913	2.000	2.955	0.408
2-1/2 x 2-1/2	817025	036150	9817025	059170	0.720	1.760	2.290	2.480	3.580	0.855
3 x 3	817030	036151	9817030	059171	0.815	1.885	2.864	2.700	4.230	1.113
4 x 4	817040	036152	9817040	059172	0.835	2.260	3.786	3.095	5.345	2.240
6 x 6	817060	036154	9817060	059173	1.545	3.030	5.709	4.575	7.615	5.190
8 x 8	817080	036155	9817080	059174	2.210	4.040	7.565	6.250	9.775	10.906
10 x 10	817100	036862	9817100	059087	2.565	5.500	10.360	8.065	11.935	19.680
12 x 12	817020	036863	9817120	059088	3.080	6.500	11.294	9.580	14.200	32.701

SCHEDULE 80 FITTINGS

45° ELBOW

(FPT x FPT)

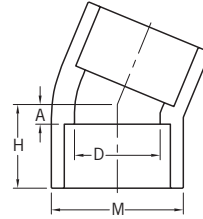


Nominal Pipe Size	Xirtec		Corzan		Dimensions					
	Universal Part #	IPEX Part #	Universal Part #	IPEX Part #	A	D	K	M	T	Wt. (lbs)
1/4 x 1/4	819002	036160	9819002	059176	0.185	0.302	0.780	0.845	0.595	0.031
3/8 x 3/8	819003	036161	9819003	059177	0.200	0.423	0.815	1.000	0.615	0.040
1/2 x 1/2	819005	036162	9819005	059178	0.320	0.526	0.995	1.215	0.675	0.079
3/4 x 3/4	819007	036163	9819007	059179	0.520	0.722	1.195	1.470	0.675	0.115
1 x 1	819010	036164	9819010	059180	0.535	0.936	1.380	1.760	0.845	0.159
1-1/4 x 1-1/4	819012	036165	9819012	059181	0.725	1.255	1.620	2.145	0.895	0.249
1-1/2 x 1-1/2	819015	036166	9819015	059182	0.915	1.476	1.810	2.385	0.895	0.333
2 x 2	819020	036167	9819020	059183	1.145	1.913	2.060	2.955	0.915	0.459
2-1/2 x 2-1/2	819025	036168	9819025	059184	1.210	2.290	2.665	3.580	1.455	1.140
3 x 3	819030	036169	9819030	059185	1.450	2.864	2.990	4.230	1.540	1.780
4 x 4	819040	036170	9819040	059186	1.895	3.786	3.495	5.345	1.600	2.710

SCHEDULE 80 FITTINGS

22-1/2° ELBOW

(SOC x SOC)

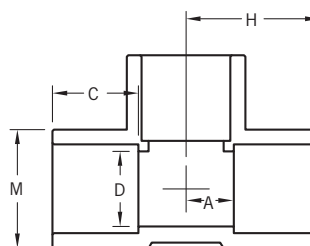


Nominal Pipe Size	Xirtec		Corzan		Dimensions				
	Universal Part #	IPEX Part #	Universal Part #	IPEX Part #	A	D	H	M	Wt. (lbs)
2 x 2	816020	036134	9816020	059614	0.440	1.913	1.875	2.955	0.379
3 x 3	816030	036135	9816030	059615	0.565	2.864	2.405	4.230	0.970
4 x 4	816040	036136	9816040	059616	0.625	3.786	2.875	5.345	1.671

SCHEDULE 80 FITTINGS

TEE

(SOC x SOC x SOC)

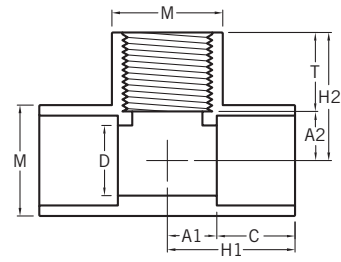


Nominal Pipe Size	Xirtec		Corzan		Dimensions					
	Universal Part #	IPEX Part #	Universal Part #	IPEX Part #	A	C	D	H	M	Wt. (lbs)
1/4 x 1/4 x 1/4	801002	036768	9801002	059479	0.315	0.655	0.302	0.970	0.845	0.040
3/8 x 3/8 x 3/8	801003	036769	9801003	059480	0.470	0.780	0.423	1.250	0.985	0.060
1/2 x 1/2 x 1/2	801005	036770	9801005	059481	0.510	0.895	0.526	1.405	1.240	0.115
3/4 x 3/4 x 3/4	801007	036771	9801007	059482	0.580	1.015	0.722	1.595	1.415	0.159
1 x 1 x 1	801010	036772	9801010	059483	0.700	1.145	0.936	1.845	1.750	0.251
1-1/4 x 1-1/4 x 1-1/4	801012	036773	9801012	059484	0.885	1.270	1.255	2.155	2.350	0.381
1-1/2 x 1-1/2 x 1-1/2	801015	036774	9801015	059485	0.890	1.395	1.476	2.410	2.405	0.498
2 x 2 x 2	801020	036775	9801020	059486	1.025	1.520	1.913	2.800	2.895	0.882
2-1/2 x 2-1/2 x 2-1/2	801025	036776	9801025	059487	1.380	1.775	2.290	3.280	3.570	1.380
3 x 3 x 3	801030	036777	9801030	059488	1.450	1.900	2.864	3.720	4.200	2.046
4 x 4 x 4	801040	036778	9801040	059489	1.565	2.270	3.786	4.595	5.280	3.684
6 x 6 x 6	801060	036780	9801060	059490	2.400	3.030	5.709	6.530	7.575	9.555
8 x 8 x 8	801080	036781	9801080	059491	3.125	4.130	7.565	8.625	9.810	19.041
10 x 10 x 10	801100	036866	9801100	059062	4.750	5.500	9.493	11.250	12.000	35.400
12 x 12 x 12	801120	036876	9801120	059084	6.885	6.500	11.294	13.385	14.200	54.450

SCHEDULE 80 FITTINGS

TEE

(SOC x SOC x FPT)

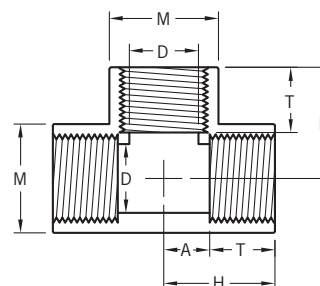


Nominal Pipe Size	Xirtec		Corzan		Dimensions								Wt. (lbs)
	Universal Part #	IPEX Part #	Universal Part #	IPEX Part #	A1	A2	C	D	H1	H2	M	T	
1/2 x 1/2 x 1/2	802005	036828	9802005	059942	0.470	0.470	0.905	0.526	1.375	1.375	1.240	0.905	0.139
3/4 x 3/4 x 3/4	802007	036829	9802007	059943	0.585	0.585	1.030	0.722	1.615	1.615	1.415	1.030	0.205
1 x 1 x 1	802010	036830	9802010	059518	0.665	0.665	1.150	0.936	1.815	1.815	1.750	1.150	0.295
2 x 2 x 2	802020	036832	9802020	059089	1.315	1.445	1.500	1.913	2.815	2.415	2.845	0.970	0.700

SCHEDULE 80 FITTINGS

TEE

(FPT x FPT x FPT)

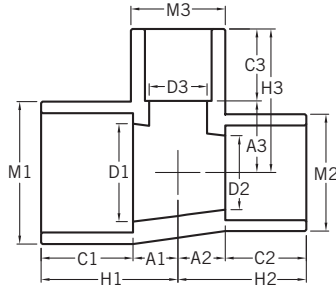


Nominal Pipe Size	Xirtec		Corzan		Dimensions					
	Universal Part #	IPEX Part #	Universal Part #	IPEX Part #	A	D	H	M	T	Wt. (lbs)
1/4 x 1/4 x 1/4	805002	036817	9805002	059507	0.315	0.302	0.970	0.845	0.655	0.051
3/8 x 3/8 x 3/8	805003	036818	9805003	059508	0.405	0.423	1.030	0.985	0.625	0.071
1/2 x 1/2 x 1/2	805005	036819	9805005	059509	0.625	0.526	1.370	1.280	0.745	0.148
3/4 x 3/4 x 3/4	805007	036820	9805007	059510	0.585	0.722	1.605	1.415	1.020	0.216
1 x 1 x 1	805010	036821	9805010	059511	0.645	0.936	1.815	1.750	1.170	0.326
1-1/4 x 1-1/4 x 1-1/4	805012	036822	9805012	059512	0.885	1.255	1.885	2.350	1.000	0.439
1-1/2 x 1-1/2 x 1-1/2	805015	036823	9805015	059513	1.070	1.476	2.055	2.405	0.985	0.602
2 x 2 x 2	805020	036824	9805020	059514	1.330	1.913	2.370	2.895	1.040	0.875
2-1/2 x 2-1/2 x 2-1/2	805025	036825	9805025	059515	1.515	2.290	2.965	3.570	1.450	1.601
3 x 3 x 3	805030	036826	9805030	059516	1.755	2.864	3.180	4.310	1.425	2.022
4 x 4 x 4	805040	036827	9805040	059517	2.240	3.786	3.735	5.490	1.495	3.768

SCHEDULE 80 FITTINGS

REDUCING TEE

(SOC x SOC x SOC)



SCHEDULE 80 FITTINGS

Nominal Pipe Size	Xirtec		Corzan	
	Universal Part #	IPEX Part #	Universal Part #	IPEX Part #
3/4 x 3/4 x 1/2	801101	036786	9801101	059492
3/4 x 3/4 x 1	801102	036787	-	-
1 x 3/4 x 1	801126	036791	-	-
1 x 1 x 1/2	801130	036788	9801130	059493
1 x 1 x 3/4	801131	036789	9801131	059494
1-1/4 x 1 x 3/4	801157	036792	-	-
1-1/4 x 1-1/4 x 3/4	801167	036793	-	-
1-1/4 x 1 x 1	-	-	9801158	059601
1-1/4 x 1-1/4 x 1	801168	036794	9801168	059602
1-1/4 x 1 x 1-1/4	-	-	9801159	059495
1-1/2 x 1-1/4 x 1	-	-	9801202	059603
1-1/2 x 1-1/2 x 3/4	801210	036795	9801210	059496
1-1/2 x 1-1/2 x 1	801211	036796	9801211	059497
2 x 2 x 1/2	801247	036797	9801247	059498
2 x 2 x 3/4	801248	036798	9801248	059499
2 x 2 x 1	801249	036799	9801249	059500
2 x 2 x 1-1/2	801251	036800	9801251	059501
2-1/2 x 2-1/2 x 1	-	-	9801289	059604
2-1/2 x 2-1/2 x 1-1/4	-	-	9801290	059605
2-1/2 x 2-1/2 x 1-1/2	-	-	9801291	059606
2-1/2 x 2-1/2 x 2	-	-	9801292	059607
3 x 3 x 2	801338	036802	9801338	059502
3 x 3 x 2-1/2	801339	036803	9801339	059508
4 x 4 x 2	801420	036804	9801420	059504
4 x 4 x 3	801422	036805	9801422	059505
6 x 6 x 3	801530	036807	9801530	059609
6 x 6 x 4	801532	036808	9801532	059506
8 x 8 x 6	801585	036810	9801585	059567
10 x 10 x 6	-	-	9801626	059610

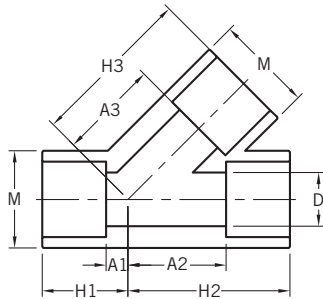
Dimensions																
A1	A2	A3	C1	C2	C3	D1	D2	D3	H1	H2	H3	M1	M2	M3	Wt. (lbs)	
0.635	0.635	0.575	1.030	1.030	0.890	0.722	0.722	0.526	1.665	1.665	1.465	1.415	1.415	1.240	0.148	
0.535	0.535	0.630	1.130	1.130	1.300	0.722	0.722	0.936	1.665	1.665	1.930	1.415	1.415	1.750	0.209	
0.580	0.580	0.650	1.300	1.300	1.130	0.936	0.722	0.936	1.880	1.880	1.780	1.750	1.415	1.750	0.220	
0.595	0.595	0.875	1.125	1.125	0.875	0.936	0.936	0.526	1.720	1.720	1.750	1.750	1.750	1.240	0.201	
0.615	0.615	0.710	1.315	1.315	1.025	0.936	0.936	0.722	1.930	1.930	1.735	1.750	1.750	1.415	0.243	
0.690	0.625	1.065	1.250	1.250	1.000	1.255	0.936	0.722	1.940	1.875	2.065	2.350	1.750	1.415	0.300	
0.750	0.750	0.870	1.460	1.460	1.150	1.255	1.255	0.722	2.210	2.210	2.020	2.350	2.350	1.415	0.353	
0.875	0.875	0.780	1.250	1.250	1.125	1.255	0.936	0.936	2.125	2.125	1.905	2.350	1.750	1.750	0.353	
0.875	0.875	1.565	1.280	1.250	0.875	1.255	1.255	0.936	2.155	2.125	2.440	2.350	2.350	1.750	0.375	
0.940	0.875	1.030	1.250	1.250	1.125	1.255	0.936	1.255	2.190	2.125	2.155	2.350	1.750	2.350	0.366	
0.875	0.875	1.220	1.375	1.375	1.125	1.476	1.255	0.936	2.250	2.250	2.345	2.405	2.350	1.750	0.419	
0.650	0.650	1.060	1.600	1.600	1.150	1.476	1.476	0.722	2.250	2.250	2.210	2.405	2.405	1.415	0.397	
0.940	0.875	1.030	1.250	1.250	1.125	1.476	1.476	0.936	2.190	2.125	2.155	2.405	2.405	1.750	0.454	
0.900	0.900	1.015	1.405	1.405	1.145	1.913	1.913	0.526	2.305	2.305	2.160	2.895	2.895	1.240	0.631	
0.595	0.595	1.440	1.500	1.500	0.875	1.913	1.913	0.722	2.095	2.095	2.315	2.895	2.895	1.415	0.650	
0.690	0.690	1.440	1.500	1.500	1.000	1.913	1.913	0.936	2.190	2.190	2.440	2.895	2.895	1.750	0.593	
0.870	0.870	1.290	1.530	1.530	1.140	1.913	1.913	1.476	2.400	2.400	2.430	2.895	2.895	2.405	0.705	
0.810	0.810	1.815	1.815	1.815	1.125	2.290	2.290	0.936	2.625	2.625	2.940	3.570	3.570	1.750	1.036	
1.065	1.065	1.750	1.750	1.750	1.250	2.290	2.290	1.255	2.815	2.815	3.000	3.570	3.570	2.350	1.102	
1.160	1.160	1.750	1.780	1.780	1.375	2.290	2.290	1.476	2.940	2.940	3.125	3.570	3.570	2.405	1.213	
1.405	1.405	1.720	1.750	1.750	1.500	2.290	2.290	1.913	3.155	3.155	3.220	3.570	3.570	2.895	1.411	
1.445	1.520	1.830	1.995	1.920	1.530	2.864	2.864	1.913	3.440	3.440	3.360	4.200	4.200	2.880	1.598	
1.460	1.920	1.785	1.990	1.530	1.525	2.864	2.864	2.290	3.450	3.450	3.310	4.200	4.200	3.570	1.962	
2.200	2.200	2.560	2.260	2.260	1.525	3.786	3.786	1.913	4.460	4.460	4.085	5.280	5.280	2.880	3.086	
2.090	2.090	2.310	2.260	2.260	1.910	3.786	3.786	2.864	4.350	4.350	4.220	5.280	5.280	4.200	3.040	
2.830	2.830	3.755	2.975	2.975	1.875	5.709	5.709	2.864	5.805	5.805	5.630	7.575	7.575	4.200	6.370	
2.800	2.800	3.475	3.025	3.025	2.275	5.709	5.709	3.786	5.825	5.825	5.750	7.575	7.575	5.280	7.357	
3.600	3.600	4.565	4.120	4.120	3.060	7.565	7.565	5.709	7.720	7.720	7.625	9.810	9.810	7.575	15.000	
3.875	3.875	5.845	5.500	5.500	3.000	9.493	9.493	5.709	9.375	9.375	8.845	12.065	12.065	7.575	26.037	

SCHEDULE 80 FITTINGS

SCHEDULE 80 FITTINGS

45° WYE

(SOC x SOC x SOC)

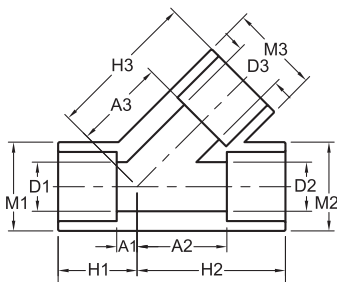


SCHEDULE 80 FITTINGS

Nominal Pipe Size	Xirtec		Corzan	
	Universal Part #	IPEX Part #	Universal Part #	IPEX Part #
1/2 x 1/2 x 1/2	-	-	9875005	059652
3/4 x 3/4 x 3/4	-	-	9875007	059653
1 x 1 x 1	-	-	9875010	059654
1-1/4 x 1-1/4 x 1-1/4	-	-	9875012	059655
1-1/2 x 1-1/2 x 1-1/2	875015	036854	9875015	059553
2 x 2 x 2	875020	036855	9875020	059536
3 x 3 x 3	875030	036856	9875030	059537
4 x 4 x 4	875040	036857	9875040	059538
6 x 6 x 6	875060	036858	9875060	059539
8 x 8 x 8	875080	036859	-	-

45° REDUCING WYE

(SOC x SOC x SOC)



Nominal Pipe Size	Xirtec		Corzan	
	Universal Part #	IPEX Part #	Universal Part #	IPEX Part #
6 x 6 x 4	875532	036861	9875532	059541

Dimensions									
	A1	A2	A3	D	H1	H2	H3	M	Wt. (lbs)
	0.265	1.390	1.200	0.526	1.345	2.400	2.400	1.380	0.130
	0.265	1.390	1.200	0.722	1.345	2.400	2.400	1.380	0.190
	0.385	1.715	1.745	0.936	1.500	2.830	2.860	1.695	0.397
	0.405	2.155	2.155	1.255	1.735	3.360	3.360	2.060	0.551
	0.690	2.375	2.405	1.476	2.065	3.750	3.750	2.345	0.690
	0.845	3.030	3.030	1.913	2.345	4.530	4.530	2.875	1.199
	1.120	4.405	4.365	2.864	2.990	6.275	6.235	4.150	2.599
	1.320	5.675	5.625	3.786	3.570	7.925	7.875	5.235	4.451
	1.345	8.015	8.560	5.709	4.385	11.055	11.600	7.560	12.000
	7.220	15.280	15.530	7.565	11.470	19.530	19.530	9.690	25.240

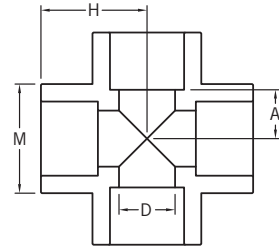
SCHEDULE 80 FITTINGS

Dimensions													
	A1	A2	A3	D1	D2	D3	H1	H2	H3	M1	M2	M3	Wt. (lbs)
	0.480	6.830	7.325	5.709	5.709	3.786	3.480	9.830	9.585	7.550	7.550	5.240	9.140

SCHEDULE 80 FITTINGS

CROSS

(SOC x SOC x SOC)



Nominal Pipe Size	Xirtec		Corzan		Dimensions				
	Universal Part #	IPEX Part #	Universal Part #	IPEX Part #	A	D	H	M	Wt. (lbs)
1/4 x 1/4 x 1/4 x 1/4	-	-	9820002	059620	0.405	0.302	1.030	0.845	0.066
1/2 x 1/2 x 1/2 x 1/2	820005	036116	9820005	059154	0.565	0.526	1.470	1.510	0.126
3/4 x 3/4 x 3/4 x 3/4	820007	036117	9820007	059155	0.610	0.722	1.640	1.710	0.187
1 x 1 x 1 x 1	820010	036118	9820010	059156	0.955	0.936	2.110	2.110	0.342
1-1/4 x 1-1/4 x 1-1/4 x 1-1/4	820012	036119	9820012	059157	1.095	1.255	2.375	2.440	0.476
1-1/2 x 1-1/2 x 1-1/2 x 1-1/2	820015	036120	9820015	059158	1.235	1.476	2.640	2.575	0.661
2 x 2 x 2 x 2	820020	036121	9820020	059159	1.530	1.913	3.000	3.040	0.981
2-1/2 x 2-1/2 x 2-1/2 x 2-1/2	820025	036122	9820025	059018	1.750	2.290	3.440	3.350	1.687
3 x 3 x 3 x 3	820030	036123	9820030	059160	2.095	2.864	3.970	4.110	2.590
4 x 4 x 4 x 4	820040	036124	9820040	059161	2.625	3.786	4.875	5.250	5.201

SCHEDULE 80 FITTINGS

FLANGE

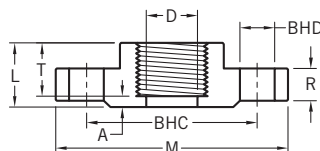


(ONE PIECE SOC)

Nominal Pipe Size	Xirtec		Corzan		Dimensions										
	Universal Part #	IPEX Part #	Universal Part #	IPEX Part #	A	BHC	BHD	BHN	C	D	L	M	R	S	Wt. (lbs)
1/2	851005	036223	9851005	059228	0.175	2.375	0.630	4.000	0.915	0.526	1.090	3.500	0.470	0.000	0.194
3/4	851007	036224	9851007	059229	0.210	2.750	0.630	4.000	1.015	0.722	1.225	3.880	0.525	0.050	0.310
1	851010	036225	9851010	059230	0.210	3.125	0.630	4.000	1.135	0.936	1.345	4.250	0.585	0.050	0.440
1-1/4	851012	036226	9851012	059231	0.210	3.500	0.620	4.000	1.255	1.255	1.465	4.620	0.650	0.050	0.461
1-1/2	851015	036227	9851015	059232	0.200	3.875	0.625	4.000	1.385	1.476	1.585	5.000	0.730	0.050	0.710
2	851020	036228	9851020	059233	0.230	4.750	0.745	4.000	1.525	1.913	1.755	6.000	0.820	0.065	0.895
2-1/2	851025	036229	9851025	059234	0.210	5.500	0.745	4.000	1.750	2.290	1.960	7.000	0.900	0.065	1.630
3	851030	036230	9851030	059235	0.205	6.000	0.700	4.000	1.920	2.864	2.125	7.500	1.070	0.080	1.982
4	851040	036231	9851040	059236	0.235	7.500	0.745	8.000	2.240	3.786	2.475	9.000	1.115	0.040	2.730
5	851050	036232	-	-	0.220	8.500	0.880	8.000	3.030	4.768	3.250	10.175	1.040	0.040	3.000
6	851060	036233	9851060	059238	0.380	9.560	0.965	8.000	3.120	5.709	3.500	11.000	1.350	0.040	4.060
8	851080	036234	9851080	059239	0.575	11.705	0.880	8.000	4.000	7.565	4.575	13.580	1.500	0.045	7.630

Note: BHN = Bolt Hole Numbers, BHC = Bolt Hole Center, BHD = Bolt Hole Diameter

FLANGE



(ONE PIECE FPT)

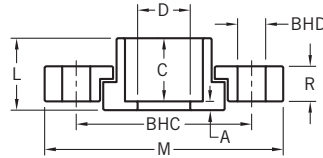
Nominal Pipe Size	Xirtec		Corzan		Dimensions									
	Universal Part #	IPEX Part #	Universal Part #	IPEX Part #	A	BHC	BHD	BHN	D	L	M	R	T	Wt. (lbs)
1/2	852005	036240	9852005	059240	0.205	2.375	0.640	4.000	0.526	1.010	3.500	0.470	0.805	0.196
3/4	852007	036241	9852007	059241	0.200	2.750	0.640	4.000	0.722	1.010	3.880	0.525	0.810	0.267
1	852010	036242	9852010	059242	0.200	3.125	0.640	4.000	0.936	1.175	4.250	0.590	0.975	0.450
1-1/4	852012	036243	9852012	059243	0.205	3.500	0.625	4.000	1.255	1.215	4.620	0.655	1.010	0.483
1-1/2	852015	036244	9852015	059244	0.200	3.875	0.625	4.000	1.476	1.190	5.000	0.735	0.990	0.680
2	852020	036245	9852020	059245	0.215	4.750	0.750	4.000	1.913	1.250	6.000	0.810	1.035	0.873
2-1/2	852025	036246	9852025	059246	0.230	5.500	0.750	4.000	2.290	1.585	7.000	0.900	1.355	1.650
3	852030	036247	9852030	059247	0.240	6.000	0.755	4.000	2.864	1.700	7.500	0.900	1.460	1.810
4	852040	036248	9852040	059248	0.240	7.500	0.755	8.000	3.786	1.800	9.000	1.095	1.560	2.482
6	852060	036249	9852060	059249	0.450	9.500	0.880	8.000	5.709	3.500	11.000	1.270	3.050	7.690

Note: BHN = Bolt Hole Numbers, BHC = Bolt Hole Center, BHD = Bolt Hole Diameter

SCHEDULE 80 FITTINGS

FLANGE - VAN STONE HEAVY DUTY

(SOC w/ FIBRE LOC RING)



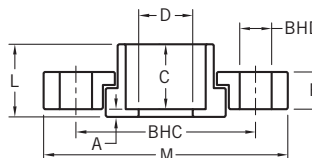
Nominal Pipe Size	Xirtec		Corzan		Dimensions										Wt. (lbs)
	Universal Part #	IPEX Part #	Universal Part #	IPEX Part #	A	BHC	BHD	BHN	C	D	L	M	R		
1/2	-	-	9854005	059262	0.155	2.375	0.500	4.000	0.875	0.526	1.030	3.500	0.530	0.200	
3/4	-	-	9854007	059263	0.125	2.750	0.500	4.000	1.000	0.722	1.125	3.875	0.565	0.270	
1	-	-	9854010	059264	0.155	3.125	0.500	4.000	1.125	0.936	1.280	4.250	0.625	0.370	
1-1/4	-	-	9854012	059265	0.155	3.500	0.500	4.000	1.250	1.255	1.405	4.625	0.690	0.441	
1-1/2	854015HD	036323	9854015	059266	0.400	3.870	0.620	4.000	1.410	1.476	1.810	5.000	0.995	0.560	
2	854020HD	036324	9854020	059267	0.485	4.740	0.745	4.000	1.525	1.913	2.010	6.000	1.135	0.850	
2-1/2	-	-	9854025	059268	0.255	5.430	0.700	4.000	1.750	2.290	2.005	6.950	0.965	1.400	
3	854030HD	036326	9854030	059269	0.165	6.000	0.700	4.000	1.890	2.864	2.055	7.500	0.895	1.468	
4	854040HD	036416	9854040	059270	0.240	7.500	0.760	8.000	2.295	3.786	2.535	9.000	1.090	2.624	
6	854060HD	036417	9854060	059271	0.175	9.500	0.900	8.000	3.025	5.709	3.200	11.000	1.220	4.540	
8	854080HD	036418	9854080	059272	0.310	11.750	0.895	8.000	4.015	7.565	4.325	13.500	1.500	6.690	
10	854100HD	036419	9854100	059273	0.310	14.250	1.030	12.000	5.250	9.493	5.560	16.000	1.810	11.881	
12	854120HD	036429	9854120	059569	0.335	16.875	0.980	12.000	6.375	11.294	6.710	19.000	1.940	16.780	
14	854140HD	036358	-	-	0.760	18.750	1.085	12.000	6.750	12.412	7.510	21.000	2.125	26.544	
16	854160HD	036359	9854160	059360	0.375	21.250	1.085	16.000	8.000	14.224	8.375	24.000	2.125	37.115	

Note: BHN = Bolt Hole Numbers, BHC = Bolt Hole Center, BHD = Bolt Hole Diameter

SCHEDULE 80 FITTINGS

FLANGE - VAN STONE

(SOC w/ PVC RING)



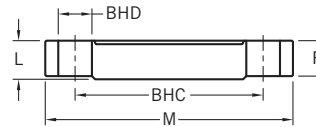
Nominal Pipe Size	Xirtec		Corzan		Dimensions									
	Universal Part #	IPEX Part #	Universal Part #	IPEX Part #	A	BHC	BHD	BHN	C	D	L	M	R	Wt. (lbs)
1/2	854005	036344	-	-	0.170	2.380	0.620	4.000	0.870	0.526	1.040	3.505	0.500	0.190
3/4	854007	036345	-	-	0.135	2.750	0.620	4.000	1.000	0.722	1.135	3.880	0.560	0.240
1	854010	036346	-	-	0.135	3.120	0.620	4.000	1.125	0.936	1.260	4.240	0.645	0.379
1-1/4	854012	036347	-	-	0.140	3.500	0.620	4.000	1.250	1.255	1.390	4.610	0.650	0.460
1-1/2	854015	036348	-	-	0.400	3.870	0.620	4.000	1.410	1.476	1.810	5.000	0.995	0.560
2	854020	036349	-	-	0.485	4.740	0.745	4.000	1.525	1.913	2.010	6.000	1.135	0.850
2-1/2	854025	036350	-	-	0.245	5.500	0.750	4.000	1.760	2.290	2.005	6.965	0.960	1.369
3	854030	036351	-	-	0.165	6.000	0.700	4.000	1.890	2.864	2.055	7.500	0.895	1.448
4	854040	036352	-	-	0.240	7.500	0.760	8.000	2.295	3.786	2.535	9.000	1.090	2.562
5	854050	035353	-	-	0.330	8.500	0.880	8.000	2.650	4.768	2.980	10.000	1.140	3.230
6	854060	036354	-	-	0.175	9.500	0.900	8.000	3.025	5.709	3.200	11.000	1.220	4.540
8	854080	036355	-	-	0.310	11.750	0.895	8.000	4.015	7.565	4.325	13.500	1.500	6.690
10	854100	036356	-	-	0.310	14.250	1.030	12.000	5.250	9.493	5.560	16.000	1.810	11.690
12	854120	036357	-	-	0.335	16.875	0.980	12.000	6.375	11.294	6.710	19.000	1.940	16.780

Note: BHN = Bolt Hole Numbers, BHC = Bolt Hole Center, BHD = Bolt Hole Diameter

SCHEDULE 80 FITTINGS

FLANGE - BLIND

(ONE PIECE)



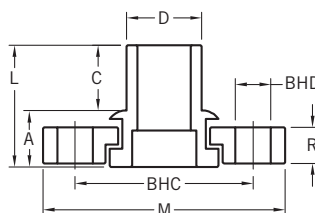
Nominal Pipe Size	Xirtec		Corzan		Dimensions						
	Universal Part #	IPEX Part #	Universal Part #	IPEX Part #	BHC	BHD	BHN	L	M	R	Wt. (lbs)
1/2	853005	036250	9853005	059250	2.380	0.630	4.000	0.520	3.500	0.470	0.185
3/4	853007	036251	9853007	059251	2.765	0.640	4.000	0.590	3.880	0.525	0.251
1	853010	036252	9853010	059252	3.125	0.645	4.000	0.635	4.250	0.590	0.450
1-1/4	853012	036253	9853012	059253	3.505	0.630	4.000	0.720	4.620	0.660	0.370
1-1/2	853015	036254	9853015	059254	3.895	0.625	4.000	0.820	5.000	0.745	0.660
2	853020	036255	9853020	059255	4.765	0.750	4.000	0.885	6.000	0.850	0.884
2-1/2	853025	036256	9853025	059256	5.500	0.740	4.000	0.960	7.000	0.900	1.610
3	853030	036257	9853030	059257	6.015	0.785	4.000	0.960	7.500	0.905	1.560
4	853040	036258	9853040	059258	7.515	0.785	4.000	1.150	9.000	1.105	2.582
6	853060	036259	9853060	059259	9.505	0.915	4.000	1.270	11.000	1.220	4.134
8	853080	036260	9853080	059260	11.755	0.910	4.000	1.560	13.500	1.500	6.740
10	-	-	9833100	059665	14.125	0.990	12.000	1.755	15.875	1.670	11.800
12	-	-	9853120	059666	17.000	0.875	12.000	1.800	19.000	1.690	17.580

Note: BHN = Bolt Hole Numbers, BHC = Bolt Hole Center, BHD = Bolt Hole Diameter

SCHEDULE 80 FITTINGS

FLANGE VAN STONE

(SPG)



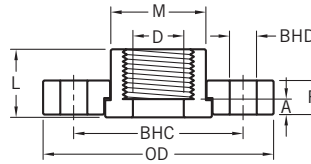
Nominal Pipe Size	Xirtec		Corzan		Dimensions										Wt. (lbs)
	Universal Part #	IPEX Part #	Universal Part #	IPEX Part #	A	BHC	BHD	BHN	C	D	L	M	R		
1/2	856005	036374	9856005	059274	0.760	2.330	0.620	4.000	0.990	0.840	1.750	3.505	0.500	0.201	
3/4	856007	036375	9856007	059275	0.895	2.750	0.620	4.000	1.005	1.050	1.900	3.870	0.550	0.269	
1	856010	036376	9856010	059276	0.990	3.120	0.620	4.000	1.140	1.315	2.130	4.240	0.635	0.410	
1-1/4	856012	036377	9856012	059277	0.955	3.500	0.620	4.000	1.355	1.660	2.310	4.600	0.655	0.500	
1-1/2	856015	036378	9856015	059278	1.045	3.880	0.620	4.000	1.560	1.900	2.605	5.040	0.690	0.617	
2	856020	036379	9856020	059279	1.300	4.750	0.750	4.000	1.525	2.375	2.825	5.950	0.820	0.977	
2-1/2	856025	036380	9856025	059280	1.275	5.500	0.750	4.000	1.790	2.875	3.065	6.965	0.955	1.290	
3	856030	036381	9856030	059281	1.230	6.000	0.750	4.000	1.890	3.500	3.120	7.500	0.900	1.896	
4	856040	036382	9856040	059282	1.370	7.500	0.750	8.000	2.290	4.500	3.660	9.000	1.110	2.637	
6	856060	036383	9856060	059283	1.450	9.500	0.875	8.000	3.010	6.625	4.460	11.000	1.220	4.620	
8	856080	036384	9856080	059570	1.730	11.750	0.875	8.000	4.000	8.625	5.730	13.500	1.500	7.950	
10	856100	036995	9856100	059663	2.250	14.250	0.875	12.000	5.750	10.750	8.000	16.000	1.625	16.090	
12	856120	036996	9856120	059664	2.185	17.000	0.875	12.000	6.315	12.750	8.500	19.000	1.625	22.700	

Note: BHN = Bolt Hole Numbers, BHC = Bolt Hole Center, BHD = Bolt Hole Diameter

SCHEDULE 80 FITTINGS

FLANGE - VAN STONE

(FPT)



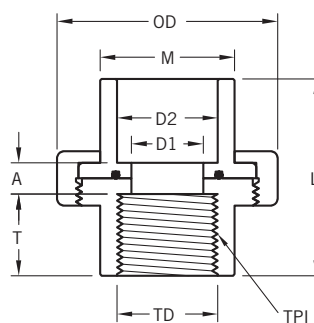
Nominal Pipe Size	Xirtec		Corzan		Dimensions									
	Universal Part #	IPEX Part #	Universal Part #	IPEX Part #	A	BHC	BHD	BHN	D	L	M	OD	R	Wt. (lbs)
1/2	855005	036385	9855005	059656	0.280	2.375	0.500	4.000	0.526	1.030	1.220	3.500	0.530	0.190
3/4	855007	036386	9855007	059657	0.405	2.750	0.500	4.000	0.722	1.155	1.375	3.875	0.565	0.249
1	855010	036387	9855010	059658	0.315	3.125	0.500	4.000	0.936	1.250	1.750	4.250	0.625	0.390
1-1/4	855012	036388	9855012	059284	0.405	3.500	0.500	4.000	1.255	1.375	2.125	4.625	0.690	0.421
1-1/2	855015	036389	9855015	059659	0.405	3.875	0.500	4.000	1.476	1.470	2.440	5.000	0.750	0.560
2	855020	036390	9855020	059660	0.500	4.750	0.625	4.000	1.913	1.565	2.970	6.000	0.815	0.870
2-1/2	855025	036391	9855025	059661	0.440	5.500	0.625	4.000	2.290	2.000	3.565	7.000	1.000	1.220
3	855030	036392	9855030	059285	0.500	6.000	0.750	4.000	2.864	2.125	4.250	7.500	1.065	1.730
4	855040	036393	9855040	059662	0.375	7.500	0.750	8.000	3.786	2.065	5.250	9.000	1.250	2.260

Note: BHN = Bolt Hole Numbers, BHC = Bolt Hole Center, BHD = Bolt Hole Diameter

SCHEDULE 80 FITTINGS

UNION

(SOC x FPT - VITON O-RINGS)

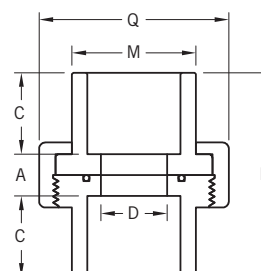


Nominal Pipe Size	Xirtec		Corzan		Dimensions									
	Universal Part #	IPEX Part #	Universal Part #	IPEX Part #	A	D1	D2	L	M	OD	T	TD	TPI	Wt. (lbs)
1/2 x 1/2	859005	036410	-	-	0.470	0.526	0.840	2.095	1.200	1.970	0.750	0.840	14.000	0.160
3/4 x 3/4	859007	036411	-	-	0.565	0.722	1.050	2.375	1.415	2.500	0.815	1.050	14.000	0.260
1 x 1	859010	036412	-	-	0.405	0.936	1.315	2.565	1.755	2.875	1.065	1.315	11.500	0.359
1-1/4 x 1-1/4	859012	036413	-	-	0.625	1.255	1.660	2.875	2.160	3.315	1.000	1.660	11.500	0.500
1-1/2 x 1-1/2	859015	036414	-	-	0.845	1.476	1.900	3.125	2.480	3.565	0.970	1.900	11.500	0.630
2 x 2	859020	036415	-	-	1.065	1.913	2.375	3.625	2.945	4.190	0.970	2.375	11.500	0.970
3 x 3	859030	236010	-	-	1.500	2.864	3.500	5.065	4.255	5.750	1.625	3.500	8.000	2.359
4 x 4	859040	236011	-	-	1.875	3.786	4.500	5.875	5.280	7.065	1.750	4.500	8.000	3.814

Note: TPI = Threads Per Inch

UNION

(SOC x SOC - VITON O-RINGS)

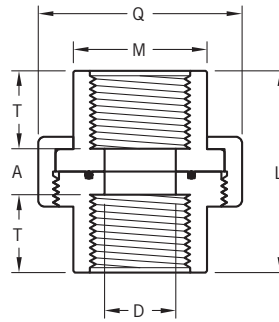


Nominal Pipe Size	Xirtec		Corzan		Dimensions						
	Universal Part #	IPEX Part #	Universal Part #	IPEX Part #	A	C	D	L	M	Q	Wt. (lbs)
1/4 x 1/4	857002	036833	9857002	059519	0.675	0.625	0.302	1.925	0.855	1.650	0.090
3/8 x 3/8	857003	036834	-	-	0.640	0.750	0.423	2.140	1.000	1.785	0.110
1/2 x 1/2	857005	036835	9857005	059520	0.515	0.895	0.526	2.305	1.200	1.985	0.150
3/4 x 3/4	857007	036836	9857007	059521	0.570	1.010	0.722	2.590	1.415	2.370	0.260
1 x 1	857010	036837	9857010	059522	0.590	1.150	0.936	2.890	1.755	2.680	0.370
1-1/4 x 1-1/4	857012	036838	9857012	059523	0.300	1.250	1.450	2.800	2.140	3.300	0.500
1-1/2 x 1-1/2	857015	036839	9857015	059524	0.350	1.380	1.700	3.110	2.460	3.525	0.600
2 x 2	857020	036840	9857020	059525	0.570	1.500	2.030	3.570	2.950	4.175	0.960
3 x 3	857030	036842	9857030	059526	1.220	1.890	2.900	5.000	4.215	5.740	2.330
4 x 4	857040	036843	9857040	059550	1.300	2.250	3.830	5.800	5.220	7.075	3.400

SCHEDULE 80 FITTINGS

UNION

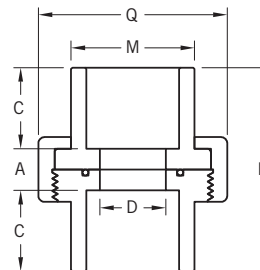
(FPT X FPT - VITON O-RINGS)



Nominal Pipe Size	Xirtec		Corzan		Dimensions						
	Universal Part #	IPEX Part #	Universal Part #	IPEX Part #	A	D	L	M	Q	T	Wt. (lbs)
1/4 x 1/4	858002	036844	9858002	059527	0.775	0.302	1.945	0.855	1.645	0.585	0.090
3/8 x 3/8	858003	036845	-	-	0.945	0.423	2.145	1.000	1.780	0.600	0.110
1/2 x 1/2	858005	036846	9858005	059529	0.510	0.526	2.130	1.200	1.975	0.810	0.160
3/4 x 3/4	858007	036847	9858007	059530	0.530	0.722	2.180	1.415	2.360	0.825	0.280
1 x 1	858010	036848	9858010	059531	0.605	0.936	2.645	1.755	2.675	1.020	0.390
1-1/4 x 1-1/4	858012	036849	9858012	059532	0.815	1.255	3.125	2.160	3.100	1.155	0.560
1-1/2 x 1-1/2	858015	036850	9858015	059533	1.045	1.476	3.585	2.480	3.830	1.270	0.650
2 x 2	858020	036851	9858020	059534	1.130	1.913	3.890	2.945	4.805	1.380	1.050
3 x 3	858030	036852	9858030	059535	1.165	2.864	4.275	4.255	6.945	1.555	2.510
4 x 4	858040	036853	9858040	059651	1.430	3.786	5.920	5.280	7.125	2.245	3.900

UNION

(SOC x SOC - EPDM O-RINGS)

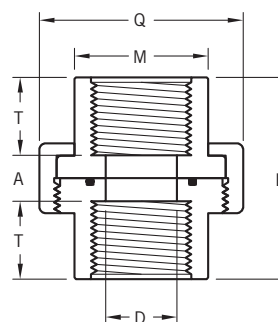


Nominal Pipe Size	Xirtec		Corzan		Dimensions						
	Universal Part #	IPEX Part #	Universal Part #	IPEX Part #	A	C	D	L	M	Q	Wt. (lbs)
1/4 x 1/4	897002	236004	-	-	0.690	0.625	0.302	1.940	0.855	1.655	0.090
3/8 x 3/8	897003	236005	-	-	0.655	0.750	0.423	2.155	1.000	1.780	0.110
1/2 x 1/2	897005	036956	9897005	059571	0.530	0.890	0.526	2.310	1.200	1.980	0.150
3/4 x 3/4	897007	036964	9897007	059572	0.540	1.015	0.722	2.570	1.415	2.345	0.260
1 x 1	897010	036980	9897010	059573	0.590	1.135	0.936	2.860	1.755	2.665	0.370
1-1/4 x 1-1/4	897012	036981	9897012	059574	0.300	1.250	1.450	2.800	2.140	3.300	0.500
1-1/2 x 1-1/2	897015	036982	9897015	059575	0.350	1.380	1.700	3.110	2.460	3.525	0.600
2 x 2	897020	036983	9897020	059576	0.570	1.500	2.030	3.570	2.950	4.175	0.960
3 x 3	897030	036984	9897030	059577	1.220	1.890	2.900	5.000	4.215	5.740	2.330
4 x 4	897040	236006	9897040	059649	1.300	2.250	3.830	5.800	5.220	7.075	3.740

SCHEDULE 80 FITTINGS

UNION

(FPT x FPT - EPDM O-RINGS)

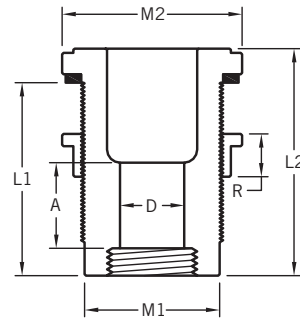


Nominal Pipe Size	Xirtec		Corzan		Dimensions						
	Universal Part #	IPEX Part #	Universal Part #	IPEX Part #	A	D	L	M	Q	T	Wt. (lbs)
1/4 x 1/4	898002	236007	-	-	0.940	0.302	1.940	0.855	1.655	0.500	0.100
3/8 x 3/8	898003	236008	-	-	1.155	0.423	2.155	1.000	1.780	0.500	0.120
1/2 x 1/2	898005	036985	9898005	059584	0.485	0.526	2.115	1.200	1.980	0.815	0.160
3/4 x 3/4	898007	036986	9898007	059578	0.710	0.722	2.350	1.415	2.290	0.820	0.280
1 x 1	898010	036987	9898010	059579	0.620	0.936	2.650	1.755	2.665	1.015	0.317
1-1/4 x 1-1/4	898012	036988	9898012	059580	0.845	1.255	3.105	2.160	3.090	1.130	0.560
1-1/2 x 1-1/2	898015	036989	9898015	059581	0.540	1.476	3.070	2.480	3.810	1.265	0.650
2 x 2	898020	036990	9898020	059582	0.510	1.913	3.300	2.945	4.785	1.395	1.050
3 x 3	898030	036993	9898030	059583	1.170	2.864	4.260	4.255	6.915	1.545	2.510
4 x 4	898040	236009	9898040	059650	2.900	3.786	5.860	5.280	6.980	1.480	4.070

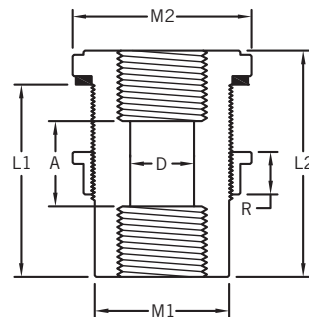
SCHEDULE 80 FITTINGS

ADAPTER

(MISC TANK - SOC x FPT)



Nominal Pipe Size	Xirtec		Corzan		Dimensions							
	Universal Part #	IPEX Part #	Universal Part #	IPEX Part #	A	D	L1	L2	M1	M2	R	Wt. (lbs)
1/2 x 1/2	871005	036038	-	-	1.500	0.526	2.440	2.905	1.220	2.030	0.625	0.059
3/4 x 3/4	871007	036039	-	-	1.190	0.722	2.470	2.940	1.625	2.250	0.625	0.172
1 x 1	871010	036040	-	-	1.250	0.936	2.815	3.315	1.970	2.625	0.625	0.172
1-1/4 x 1-1/4	871012	036041	-	-	1.530	1.255	2.845	3.405	2.315	3.095	0.625	0.227
1-1/2 x 1-1/2	871015	036042	-	-	1.250	1.476	2.815	3.625	2.690	3.595	0.625	0.227
2 x 2	871020	036043	-	-	1.625	1.913	3.250	4.125	3.250	4.875	0.750	0.454
3 x 3	871030	036218	-	-	2.190	2.864	4.500	5.500	4.565	6.000	1.000	0.392
4 x 4	871040	036046	-	-	1.250	3.786	4.000	5.000	5.500	7.500	1.250	3.175



ADAPTER

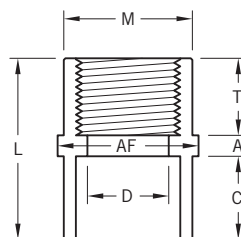
(MISC TANK - FPT x FPT)

Nominal Pipe Size	Xirtec		Corzan		Dimensions							
	Universal Part #	IPEX Part #	Universal Part #	IPEX Part #	A	D	L1	L2	M1	M2	R	Wt. (lbs)
1/2 x 1/2	872005	036047	-	-	1.500	0.526	2.190	2.940	1.220	2.030	0.625	0.059
3/4 x 3/4	872007	036048	-	-	1.500	0.722	2.470	2.940	1.625	2.250	0.625	0.172
1 x 1	872010	036049	-	-	1.250	0.936	2.815	3.315	1.970	2.625	0.625	0.172
1-1/4 x 1-1/4	872012	036050	-	-	1.530	1.255	2.845	3.405	2.315	3.095	0.625	0.227
1-1/2 x 1-1/2	872015	036051	-	-	1.690	1.476	3.065	3.595	2.690	3.595	0.625	0.227
2 x 2	872020	036052	-	-	2.815	1.913	3.250	4.125	3.250	4.875	0.750	0.454
3 x 3	872030	036053	-	-	2.690	2.864	4.500	5.500	4.565	6.000	1.000	0.907
4 x 4	872040	036055	-	-	2.000	3.786	4.000	5.000	5.500	7.500	1.250	3.175

SCHEDULE 80 FITTINGS

ADAPTER

(SOC x FPT)

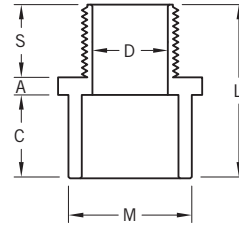


Nominal Pipe Size	Xirtec		Corzan		Dimensions							Wt. (lbs)
	Universal Part #	IPEX Part #	Universal Part #	IPEX Part #	A	AF	C	D	L	M	T	
1/4 x 1/4	835002	036209	9835002	059217	0.090	0.820	0.635	0.302	1.320	0.820	0.595	0.020
3/8 x 3/8	835003	036210	9835003	059218	0.100	1.000	0.750	0.423	1.460	1.000	0.610	0.031
1/2 x 1/2	835005	036211	9835005	059219	0.105	1.385	0.890	0.526	1.745	1.250	0.750	0.050
3/4 x 3/4	835007	036212	9835007	059220	0.110	1.630	1.000	0.722	1.880	1.465	0.770	0.070
1 x 1	835010	036213	9835010	059221	0.100	1.955	1.130	0.936	2.180	1.780	0.950	0.154
1-1/4 x 1-1/4	835012	036214	9835012	059222	0.115	2.385	1.270	1.255	2.365	2.160	0.980	0.216
1-1/2 x 1-1/2	835015	036215	9835015	059223	0.095	2.695	1.390	1.476	2.480	2.625	0.995	0.280
2 x 2	835020	036216	9835020	059224	0.115	3.245	1.510	1.913	2.655	2.950	1.030	0.375
2-1/2 x 2-1/2	835025	036217	9835025	059225	0.180	3.830	1.770	2.290	3.355	3.540	1.405	0.602
3 x 3	835030	036218	9835030	059226	0.175	4.650	1.905	2.864	3.565	4.240	1.485	0.864
4 x 4	835040	036219	9835040	059227	0.170	5.865	2.275	3.786	4.035	5.340	1.590	1.710
6 x 6	835060	036221	-	-	0.200	7.590	3.005	5.709	5.260	7.590	2.055	3.020

SCHEDULE 80 FITTINGS

ADAPTER

(SOC x MPT)

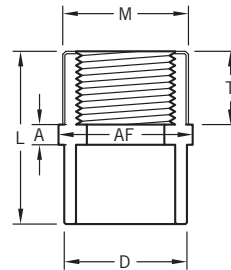


Nominal Pipe Size	Xirtec		Corzan		Dimensions						
	Universal Part #	IPEX Part #	Universal Part #	IPEX Part #	A	C	D	L	M	S	Wt. (lbs)
1/2 x 1/2	836005	036420	9836005	059286	0.245	0.890	0.526	1.890	1.250	0.755	0.042
3/4 x 3/4	836007	036421	9836007	059287	0.250	1.015	0.722	2.085	1.465	0.820	0.064
1 x 1	836010	036422	9836010	059288	0.275	1.140	0.936	2.390	1.780	0.975	0.104
1-1/4 x 1-1/4	836012	036423	9836012	059289	0.320	1.270	1.255	2.610	2.160	1.020	0.148
1-1/2 x 1-1/2	836015	036424	9836015	059290	0.330	1.385	1.476	2.745	2.625	1.030	0.194
2 x 2	836020	036425	9836020	059291	0.340	1.515	1.913	2.925	2.950	1.070	0.280
2-1/2 x 2-1/2	836025	036426	9836025	059292	0.335	1.765	2.290	3.510	3.540	1.410	0.419
3 x 3	836030	036427	9836030	059293	0.410	1.890	2.864	4.040	4.240	1.740	0.796
4 x 4	836040	036428	9836040	059294	0.375	2.270	3.786	4.385	5.340	1.740	1.250

SCHEDULE 80 FITTINGS

ADAPTER

(SPG x SS REINFORCED FPT)

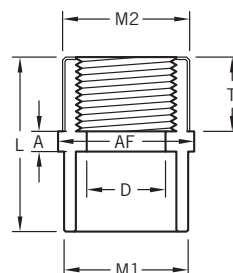


Nominal Pipe Size	Xirtec		Corzan		Dimensions						
	Universal Part #	IPEX Part #	Universal Part #	IPEX Part #	A	AF	D	L	M	T	Wt. (lbs)
1/2 x 1/2	878005SR	036965	9878005SR	059945	0.155	1.395	0.840	1.750	1.220	0.695	0.071
3/4 x 3/4	878007SR	036966	9878007SR	059946	0.190	1.680	1.050	1.935	1.375	0.695	0.075
1 x 1	878010SR	036967	9878010SR	059947	0.220	2.015	1.315	2.250	1.690	0.890	0.130
1-1/4 x 1-1/4	878012SR	036968	9878012SR	059948	0.250	2.170	1.660	2.470	2.065	0.945	0.181
1-1/2 x 1-1/2	878015SR	036969	9878015SR	059949	0.280	2.490	1.900	2.655	2.440	0.960	0.249
2 x 2	878020SR	036970	9878020SR	059950	0.365	3.375	2.375	2.815	3.030	0.990	0.379
3 x 3	878030SR	236000	9878030SR	059647	0.530	4.285	3.500	3.815	4.280	1.350	0.904
4 x 4	878040SR	236001	9878040SR	059648	0.625	4.745	4.500	4.375	5.250	1.630	1.323

SCHEDULE 80 FITTINGS

ADAPTER

(SOC x SS REINFORCED FPT)

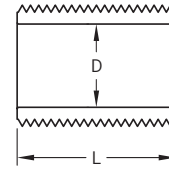


Nominal Pipe Size	Xirtec		Corzan		Dimensions							
	Universal Part #	IPEX Part #	Universal Part #	IPEX Part #	A	AF	D	L	M1	M2	T	Wt. (lbs)
1/4 X 1/4	-	-	9835002SR	059644	0.155	0.875	0.302	1.405	0.815	0.815	0.500	0.022
3/8 x 3/8	-	-	9835003SR	059645	0.125	0.970	0.423	1.470	0.970	0.970	0.500	0.044
1/2 x 1/2	835005SR	036971	9835005SR	059951	0.190	1.390	0.526	1.750	1.190	1.220	0.690	0.070
3/4 x 3/4	835007SR	036972	9835007SR	059952	0.125	1.495	0.722	1.875	1.405	1.375	0.750	0.086
1 x 1	835010SR	036973	9835010SR	059953	0.125	2.015	0.936	2.155	1.750	1.690	0.915	0.130
1-1/4 x 1-1/4	835012SR	036974	9835012SR	059954	0.190	2.440	1.255	2.315	2.125	2.065	0.915	0.190
1-1/2 x 1-1/2	835015SR	036975	9835015SR	059955	0.220	2.805	1.476	2.440	2.405	2.440	0.915	0.269
2 x 2	835020SR	036976	9835020SR	059956	0.280	3.375	1.913	2.690	3.000	3.030	0.940	0.430
2-1/2 x 2-1/2	835025SR	036977	9835025SR	059646	0.345	3.600	2.290	3.250	3.560	3.590	1.325	0.721
3 x 3	835030SR	036978	9835030SR	059957	0.220	4.280	2.864	3.500	4.250	4.280	1.445	1.049
4 x 4	835040SR	036979	9835040SR	059958	0.125	5.805	3.786	3.970	5.220	5.250	1.530	1.620

SCHEDULE 80 FITTINGS

NIPPLE

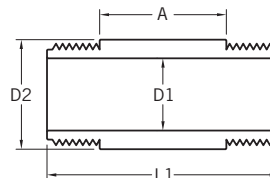
(CLOSE)



Nominal Pipe Size	Xirtec		Corzan		Dimensions		
	Universal Part #	IPEX Part #	Universal Part #	IPEX Part #	D	L	Wt. (lbs)
1/4 x 7/8	880005	036434	9880005	059296	0.302	0.875	0.009
3/8 x 1	881005	036435	9881005	059551	0.423	1.000	0.011
1/2 x 1-1/8	882005	036436	9882005	059297	0.526	1.125	0.015
3/4 x 1-3/8	883005	036437	9883005	059298	0.722	1.375	0.029
1 x 1-1/2	884005	036438	9884005	059299	0.936	1.500	0.044
1-1/4 x 1-5/8	885005	036439	9885005	059300	1.255	1.625	0.064
1-1/2 x 1-3/4	886015	036440	9886005	059301	1.476	1.750	0.088
2 x 2	887005	036441	9887005	059302	1.913	2.000	0.141
2-1/2 x 2-1/2	888005	036442	9888005	059303	2.290	2.500	0.703
3 x 2-5/8	889005	036443	9889005	059304	2.864	2.625	0.392
4 x 2-7/8	890005	036444	9890005	059305	3.786	2.875	0.661

SCHEDULE 80 FITTINGS

NIPPLE
(STANDARD)



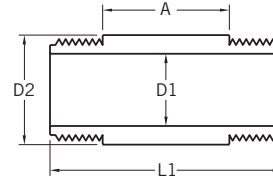
Nominal Pipe Size	Xirtec		Corzan		Dimensions				
	Universal Part #	IPEX Part #	Universal Part #	IPEX Part #	A	D1	D2	L	Wt. (lbs)
1/4 x 1-1/2	880015	036445	9880015	059306	0.620	0.302	0.540	1.500	0.013
1/4 x 2	880020	036456	9880020	059316	1.120	0.302	0.540	2.000	0.020
1/4 x 2-1/2	880025	036457	-	-	1.620	0.302	0.540	2.500	0.024
1/4 x 3	880030	036458	9880030	059317	2.120	0.302	0.540	3.000	0.026
1/4 x 3-1/2	880035	036459	-	-	2.620	0.302	0.540	3.500	0.033
1/4 x 4	880040	036460	9880040	059318	3.120	0.302	0.540	4.000	0.035
1/4 x 4-1/2	880045	036461	-	-	3.620	0.302	0.540	4.500	0.042
1/4 x 5	880050	036462	9880050	059319	4.120	0.302	0.540	5.000	0.044
1/4 x 6	880060	036463	9880060	059320	5.120	0.302	0.540	6.000	0.055
1/4 x 8	880080	036464	-	-	7.120	0.302	0.540	8.000	0.079
1/4 x 10	880100	236012	-	-	9.120	0.302	0.540	10.000	0.022
1/4 x 12	880120	236013	-	-	11.120	0.302	0.540	12.000	0.100
3/8 x 1-1/2	881015	036446	9881015	059307	0.620	0.423	0.675	1.500	0.132
3/8 x 2	881020	036466	9881020	059552	1.120	0.423	0.675	2.000	0.029
3/8 x 2-1/2	881025	036467	-	-	1.620	0.423	0.675	2.500	0.031
3/8 x 3	881030	036468	9881030	059939	2.120	0.423	0.675	3.000	0.040
3/8 x 3-1/2	881035	036469	-	-	2.620	0.423	0.675	3.500	0.042
3/8 x 4	881040	036470	9881040	059554	3.120	0.423	0.675	4.000	0.046
3/8 x 4-1/2	881045	036471	-	-	3.620	0.423	0.675	4.500	0.053
3/8 x 5	881050	036472	-	-	4.120	0.423	0.675	5.000	0.060
3/8 x 6	881060	036473	-	-	5.120	0.423	0.675	6.000	0.073
3/8 x 8	881080	036474	-	-	7.120	0.423	0.675	8.000	0.104
1/2 x 1-1/2	882015	036447	9882015	059308	0.440	0.526	0.840	1.500	0.024
1/2 x 2	882020	036475	9882020	059322	0.940	0.526	0.840	2.000	0.031
1/2 x 2-1/2	882025	036476	-	-	1.440	0.526	0.840	2.500	0.049
1/2 x 3	882030	036477	9882030	059321	1.940	0.526	0.840	3.000	0.051
1/2 x 3-1/2	882035	036478	-	-	2.440	0.526	0.840	3.500	0.064
1/2 x 4	882040	036479	9882040	059324	2.940	0.526	0.840	4.000	0.068
1/2 x 4-1/2	882045	036480	-	-	3.440	0.526	0.840	4.500	0.079
1/2 x 5	882050	036481	9882050	059325	3.940	0.526	0.840	5.000	0.084

Continued

SCHEDULE 80 FITTINGS

NIPPLE

(STANDARD) con't



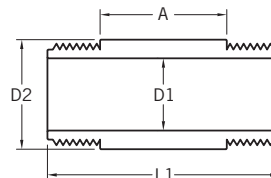
Nominal Pipe Size	Xirtec		Corzan		Dimensions				
	Universal Part #	IPEX Part #	Universal Part #	IPEX Part #	A	D1	D2	L	Wt. (lbs)
1/2 x 5-1/2	882055	036482	-	-	4.440	0.526	0.840	5.500	0.097
1/2 x 6	882060	036483	9882060	059326	4.940	0.526	0.840	6.000	0.097
1/2 x 8	882080	036484	-	-	6.940	0.526	0.840	8.000	0.128
1/2 x 10	882100	036485	-	-	8.940	0.526	0.840	10.000	0.148
1/2 x 12	882120	036486	-	-	10.940	0.526	0.840	12.000	0.181
3/4 x 1-1/2	883015	036448	9883015	059309	0.400	0.772	1.050	1.500	0.044
3/4 x 2	883020	036490	9883020	059327	0.900	0.722	1.050	2.000	0.044
3/4 x 2-1/2	883025	036491	-	-	1.400	0.722	1.050	2.500	0.057
3/4 x 3	883030	036492	9883030	059328	1.900	0.722	1.050	3.000	0.073
3/4 x 3-1/2	883035	036493	-	-	2.400	0.722	1.050	3.500	0.082
3/4 x 4	883040	036494	9883040	059329	2.900	0.722	1.050	4.000	0.088
3/4 x 4-1/2	883045	036495	-	-	3.400	0.722	1.050	4.500	0.106
3/4 x 5	883050	036496	9883050	059331	3.900	0.722	1.050	5.000	0.108
3/4 x 5-1/2	883055	036497	-	-	4.400	0.722	1.050	5.500	0.128
3/4 x 6	883060	036498	9883060	059332	4.900	0.722	1.050	6.000	0.128
3/4 x 8	883080	036500	-	-	6.900	0.722	1.050	8.000	0.172
3/4 x 10	883100	036501	-	-	8.900	0.722	1.050	10.000	0.216
3/4 x 12	883120	036502	-	-	10.900	0.722	1.050	12.000	0.262
1 x 2	884020	036449	9884020	059310	0.640	0.936	1.315	2.000	0.060
1 x 2-1/2	884025	036504	-	-	1.140	0.936	1.315	2.500	0.082
1 x 3	884030	036505	9884030	059333	1.640	0.936	1.315	3.000	0.093
1 x 3-1/2	884035	036506	-	-	2.140	0.936	1.315	3.500	0.117
1 x 4	884040	036507	9884040	059334	2.640	0.936	1.315	4.000	0.134
1 x 4-1/2	884045	036508	-	-	3.140	0.936	1.315	4.500	0.152
1 x 5	884050	036509	9884050	059335	3.640	0.936	1.315	5.000	0.157
1 x 5-1/2	884055	036510	-	-	4.140	0.936	1.315	5.500	0.190
1 x 6	884060	036511	9884060	059336	4.640	0.936	1.315	6.000	0.190
1 x 8	884080	036512	-	-	6.640	0.936	1.315	8.000	0.282
1 x 10	884100	036514	-	-	8.640	0.936	1.315	10.000	0.342
1 x 12	884120	036515	-	-	10.640	0.936	1.315	12.000	0.417

Continued

SCHEDULE 80 FITTINGS

NIPPLE

(STANDARD) con't



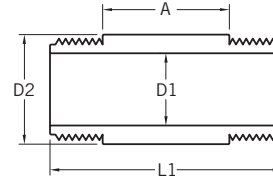
Nominal Pipe Size	Xirtec		Corzan		Dimensions				
	Universal Part #	IPEX Part #	Universal Part #	IPEX Part #	A	D1	D2	L	Wt. (lbs)
1-1/4 x 2	885020	036450	9885020	059311	0.580	1.255	1.660	2.000	0.099
1-1/4 x 2-1/2	885025	036516	-	-	1.080	1.255	1.660	2.500	0.104
1-1/4 x 3	885030	036517	9885030	059338	1.580	1.255	1.660	3.000	0.132
1-1/4 x 3-1/2	885035	036518	-	-	2.080	1.255	1.660	3.500	0.159
1-1/4 x 4	885040	036519	9885040	059339	2.580	1.255	1.660	4.000	0.786
1-1/4 x 4-1/2	885045	036520	-	-	3.080	1.255	1.660	4.500	0.212
1-1/4 x 5	885050	036521	9885050	059340	3.580	1.255	1.660	5.000	0.225
1-1/4 x 6	885060	036522	9885060	059341	4.580	1.255	1.660	6.000	0.265
1-1/4 x 8	885080	036523	-	-	6.580	1.255	1.660	8.000	0.381
1-1/4 x 10	885100	036524	-	-	8.580	1.255	1.660	10.000	0.489
1-1/4 x 12	885120	036525	-	-	10.580	1.255	1.660	12.000	0.580
1-1/2 x 2	886020	036451	9886020	059312	0.560	1.476	1.900	2.000	0.099
1-1/2 x 2-1/2	886025	036526	-	-	1.060	1.476	1.900	2.500	0.099
1-1/2 x 3	886030	036527	9886030	059342	1.560	1.476	1.900	3.000	0.161
1-1/2 x 3-1/2	886035	036528	-	-	2.060	1.476	1.900	3.500	0.201
1-1/2 x 4	886040	036529	9886040	059343	2.560	1.476	1.900	4.000	0.209
1-1/2 x 4-1/2	886045	036530	-	-	3.060	1.476	1.900	4.500	0.258
1-1/2 x 5	886050	036531	9886050	059344	3.560	1.476	1.900	5.000	0.267
1-1/2 x 5-1/2	886055	036532	-	-	4.060	1.476	1.900	5.500	0.315
1-1/2 x 6	886060	036533	9886060	059345	4.560	1.476	1.900	6.000	0.315
1-1/2 x 8	886080	036534	-	-	6.560	1.476	1.900	8.000	0.470
1-1/2 x 10	886100	036535	-	-	8.560	1.476	1.900	10.000	0.580
1-1/2 x 12	886120	036536	-	-	10.560	1.476	1.900	12.000	0.712
2 x 2-1/2	887025	036452	9887025	059313	0.980	1.913	2.375	2.500	0.176
2 x 3	887030	036539	9887030	059346	1.480	1.913	2.375	3.000	0.214
2 x 3-1/2	887035	036540	-	-	1.980	1.913	2.375	3.500	0.280
2 x 4	887040	036541	9887040	059347	2.480	1.913	2.375	4.000	0.282
2 x 4-1/2	887045	036542	-	-	2.980	1.913	2.375	4.500	0.337
2 x 5	887050	036543	9887050	059348	3.480	1.913	2.375	5.000	0.353
2 x 5-1/2	887055	036544	-	-	3.980	1.913	2.375	5.500	0.430

Continued

SCHEDULE 80 FITTINGS

NIPPLE

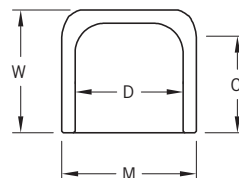
(STANDARD) con't



Nominal Pipe Size	Xirtec		Corzan		Dimensions				
	Universal Part #	IPEX Part #	Universal Part #	IPEX Part #	A	D1	D2	L	Wt. (lbs)
2 x 6	887060	036545	9887060	059349	4.480	1.913	2.375	6.000	0.439
2 x 8	887080	035546	-	-	6.480	1.913	2.375	8.000	0.617
2 x 10	887100	036547	-	-	8.480	1.913	2.375	10.000	0.807
2 x 12	887120	036548	-	-	10.480	1.913	2.375	12.000	1.001
2-1/2 x 3	888030	036549	-	-	0.720	2.290	2.875	3.000	0.137
2-1/2 x 4	888040	036550	9888040	059351	1.720	2.290	2.875	4.000	0.183
2-1/2 x 5	888050	036272	-	-	1.800	2.290	2.875	5.000	0.309
2-1/2 x 6	888060	036551	9888060	059352	3.720	2.290	2.875	6.000	0.287
2-1/2 x 8	888080	036552	-	-	5.720	2.290	2.875	8.000	0.981
2-1/2 x 10	888100	036276	-	-	7.150	2.290	2.875	10.000	0.664
2-1/2 x 12	888120	036553	-	-	9.720	2.290	2.875	12.000	1.477
3 x 3	889030	036554	9889030	059353	0.600	2.864	3.500	3.000	0.459
3 x 4	889040	036555	9889040	059354	1.600	2.864	3.500	4.000	0.635
3 x 5	889050	036556	9889050	059355	2.600	2.864	3.500	5.000	0.789
3 x 6	889060	036557	9889060	059356	3.600	2.864	3.500	6.000	0.944
3 x 8	889080	036558	-	-	5.600	2.864	3.500	8.000	1.343
3 x 10	889100	036559	-	-	7.600	2.864	3.500	10.000	1.801
3 x 12	889120	036560	-	-	9.600	2.864	3.500	12.000	2.000
4 x 4	890040	036562	9890040	059314	1.400	3.786	4.500	4.000	0.904
4 x 5	890050	036563	9890050	059039	2.400	3.786	4.500	5.000	1.133
4 x 6	890060	036564	9890060	059357	3.400	3.786	4.500	6.000	1.362
4 x 8	890080	036565	-	-	5.400	3.786	4.500	8.000	1.907
4 x 10	890100	036566	-	-	7.400	3.786	4.500	10.000	2.405
4 x 12	890120	036567	-	-	9.400	3.786	4.500	12.000	2.899

SCHEDULE 80 FITTINGS

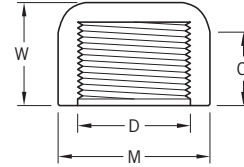
CAP
(SOC)



Nominal Pipe Size	Xirtec		Corzan		Dimensions				
	Universal Part #	IPEX Part #	Universal Part #	IPEX Part #	C	D	M	W	Wt. (lbs)
1/4	847002	036056	9847002	059107	0.730	0.540	0.815	0.940	0.011
3/8	847003	035057	9847003	059108	0.870	0.675	0.970	1.155	0.020
1/2	847005	036058	9847005	059109	0.885	0.840	1.185	1.260	0.030
3/4	847007	036059	9847007	059110	1.000	1.050	1.400	1.360	0.049
1	847010	036060	9847010	059111	1.125	1.315	1.750	1.580	0.088
1-1/4	847012	036061	9847012	059112	1.265	1.660	2.090	1.730	0.123
1-1/2	847015	036062	9847015	059113	1.395	1.900	2.355	1.930	0.170
2	847020	036063	9847020	059114	1.510	2.375	2.855	2.145	0.247
2-1/2	847025	036064	9847025	059115	1.780	2.875	3.525	2.635	0.498
3	847030	036065	9847030	059116	1.885	3.500	4.180	2.850	0.697
4	847040	036066	9847040	059117	2.285	4.500	5.250	3.335	1.323
6	847060	036067	9847060	059118	3.055	6.625	7.585	4.825	2.908
8	847080	036068	9847080	059029	5.630	8.625	9.685	6.495	6.100

SCHEDULE 80 FITTINGS

CAP
(FPT)

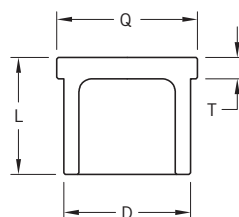


SCHEDULE 80 FITTINGS

Nominal Pipe Size	Xirtec		Corzan		Dimensions				
	Universal Part #	IPEX Part #	Universal Part #	IPEX Part #	C	D	M	W	Wt. (lbs)
1/4	848002	036072	9848002	059119	0.645	0.540	0.905	0.940	0.020
3/8	848003	036073	9848003	059120	0.750	0.675	0.970	0.905	0.020
1/2	848005	036074	9848005	059121	0.875	0.840	1.295	1.185	0.049
3/4	848007	036075	9848007	059122	1.000	1.050	1.520	1.255	0.071
1	848010	036076	9848010	059123	1.125	1.315	1.830	1.490	0.115
1-1/4	848012	036077	9848012	059124	1.250	1.660	2.235	1.500	0.148
1-1/2	848015	036078	9848015	059125	1.375	1.900	2.490	1.545	0.174
2	848020	036079	9848020	059126	1.500	2.375	3.040	1.710	0.280
2-1/2	848025	036080	9848025	059127	1.750	2.875	3.625	2.440	0.540
3	848030	036081	9848030	059128	1.875	3.500	4.305	2.520	0.769
4	848040	036082	9848040	059129	2.250	4.500	5.470	2.880	1.195

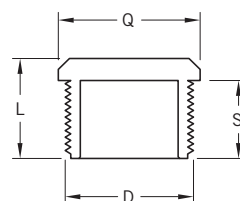
SCHEDULE 80 FITTINGS

PLUG
(SPG)



Nominal Pipe Size	Xirtec		Corzan		Dimensions					
	Universal Part #	IPEX Part #	Universal Part #	IPEX Part #	D	I	L	Q	T	Wt. (lbs)
2	849020	036585	-	-	2.375	1.520	1.875	2.565	0.380	0.229

PLUG
(MPT)



Nominal Pipe Size	Xirtec		Corzan		Dimensions				
	Universal Part #	IPEX Part #	Universal Part #	IPEX Part #	D	L	Q	S	Wt. (lbs)
1/4	850002	036568	9850002	059361	0.540	0.725	0.635	0.545	0.011
3/8	850003	035569	9850003	059362	0.675	0.760	0.800	0.565	0.011
1/2	850005	036570	9850005	059363	0.840	0.975	1.120	0.720	0.022
3/4	850007	036571	9850007	059364	1.050	1.050	1.375	0.750	0.033
1	850010	036572	9850010	059365	1.315	1.205	1.690	0.905	0.062
1-1/4	850012	036573	9850012	059366	1.660	1.435	2.055	1.005	0.080
1-1/2	850015	036574	9850015	059367	1.900	1.460	2.315	1.025	0.134
2	850020	036575	9850020	059368	2.375	1.440	2.780	1.010	0.196
2-1/2	850025	036576	9850025	059369	2.875	1.970	3.120	1.570	0.300
3	850030	036577	9850030	059370	3.500	2.000	3.740	1.630	0.460
4	850040	036578	9850040	059371	4.500	2.090	4.730	1.710	0.730
6	850060	036579	-	-	6.625	2.085	6.850	1.565	1.700

